

Installation of 240 Inner Window Scraper Moldings

By Dave Barton

These instructions will guide you through the installation of a set of inner window scrapers on your 240. If you have a 4-door model (sedan or wagon), the scraper pieces are in **two different lengths**. The shorter ones go on the front doors and the longer ones go on the rear doors.

For now, these instructions will not discuss the disassembly and removal of the inner door panels from your doors. I may include that later when I can gather some helpful photos. **So these instructions will begin with the door panel already removed.** If anyone can help with improving these instructions, or if you have found methods that will help future installers, please contact me.

In the below photo we have the door panel with the old scraper attached. You can see the metal clips that hold the scraper tightly in place. Those metal clips are strong, but brittle. If you pry them too far, they will break. And to my knowledge, they are not available. If you are careful, you can get this done without breaking any of them. **If anyone locates a source for clips like these that are still available (or some others that will work) , please let me know.**

I recommend when working with these clips that you use safety glasses or other appropriate eye protection.



Getting the new scrapers positioned correctly is important. If they are too far forward or back on the panel, then they will not fit when you re-attach the panel to your door.

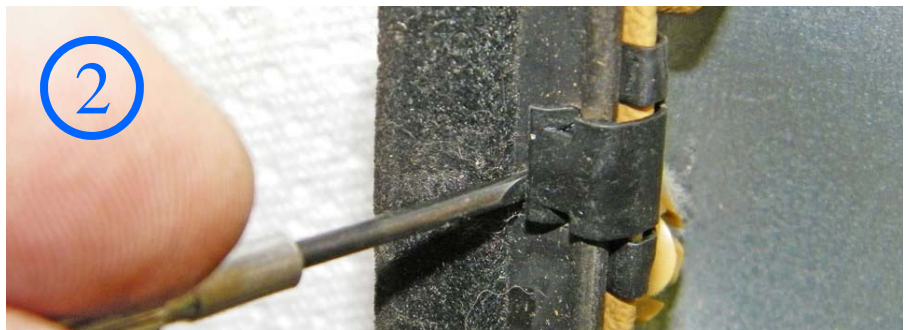
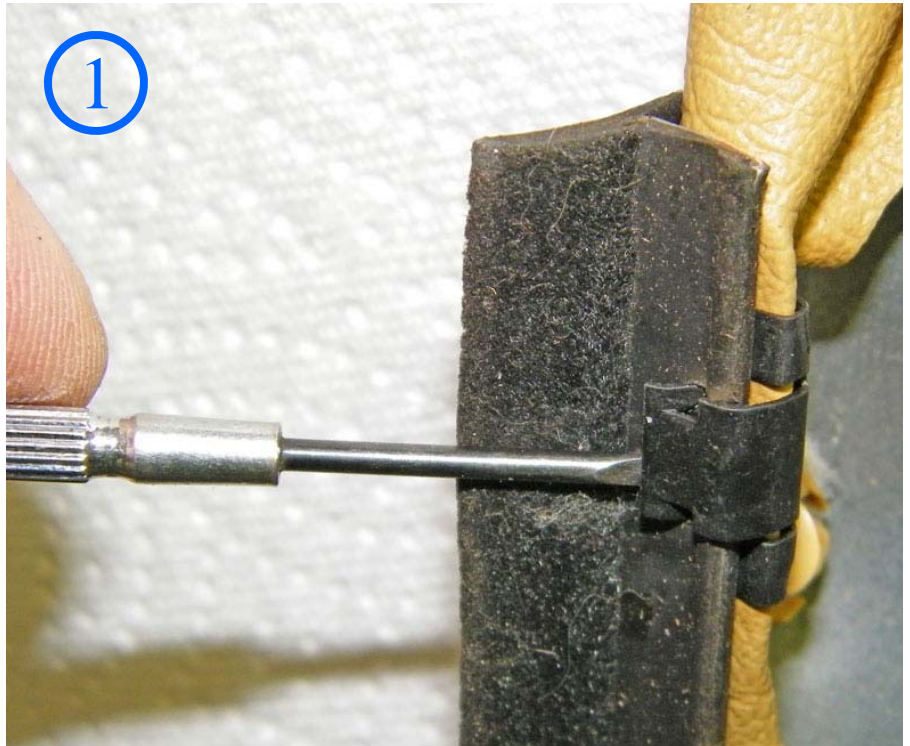
Using a pen, place a small mark on the door panel fabric at each end of the old scraper. Mark it in a place where you will not see it after it's on the door.



For this part of the procedure, you might want to get some help from someone to hold the panel.

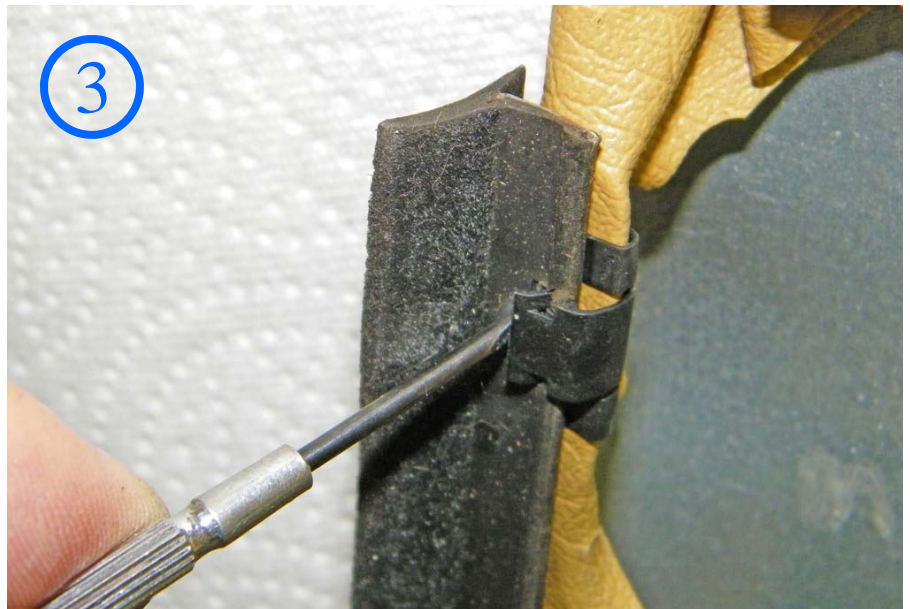
Using a small flat screwdriver, carefully slip it under the clip and slightly pry, while at the same time pushing the scraper toward the top of the door panel. Follow the 1-2-3 sequence in the photos.

An alternate method is using a small pair of pliers and gripping the clip while rotating the pliers just enough to pull the clip away from the scraper and pull the scraper free.



This should be done slowly and you should alternate between two or three clips, prying and pulling just a little on each one.

Your helper can also help to pull the scraper as you pry.



Continue this method along the clips, working on two or three at a time, until the old scraper is free.

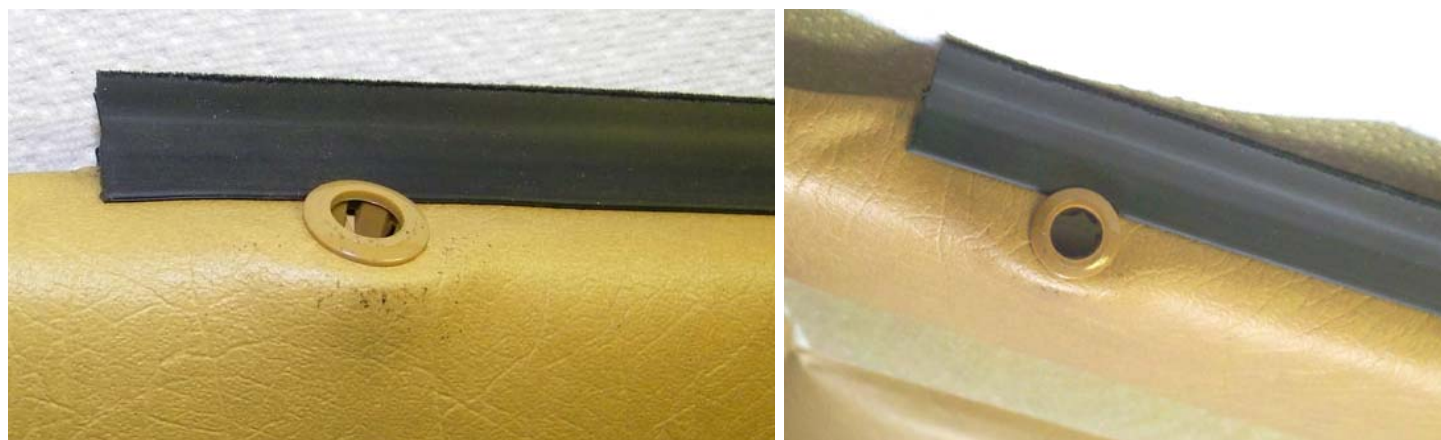


Now you may position the new scraper along the tops of the clips. Your helper may hold the other end in place. Make sure you position the new scraper in the same place as before. That's where the pen marks will help. Also be sure not to place the scraper on backwards. The metal portion goes into the clips and the felt side should be toward the window glass.



Now slowly push the new scraper down into the clips, working a little at a time along the length of the panel.

NOTE: The width of the new scraper may be a little wider than your old one and it may protrude past the door lock plunger insert as shown below. If this happens, you may tuck it under the insert using a small screwdriver.



Now reassemble your doors.

If you have discovered any tricks to making this job easier and you would like to share them, please contact Dave Barton at dbarton@linkline.com.