

# Installation of 240 Exterior Window Scraper Moldings

By Dave Barton

These instructions will guide you through the installation of a set of outer window scrapers on your 240. This is a very simple procedure and if you are an experienced Volvo wrencher, then it might take you 15 minutes for each door... a little longer if you're a novice.

For the 240 4-door model (sedan or wagon), the scraper pieces are in **two different lengths**. The shorter ones go on the front doors and the longer ones go on the rear doors.

If you're installing **used** pieces, you may notice they have experienced a some shrinkage and they may look a little short on length. Place them up against your windows. If you see a small gap on each end, an adjustment is possible. Since these moldings are very flexible, you will be able to stretch them a small amount before installation if you wish. This is best done when they're warm, such as after they have been sitting outside on a warm, sunny day. If no sun is available, try warming them with a hair blow drier. A new set of scrapers will be cut to the correct length, but they may also be stretched if needed.

These scrapers will fit all 240/260 models and even some 140s. If your 240 has a very wide metal trim piece below the windows (usually only on '82 thru '85 GL models), these scrapers will fit those also. The most common type of metal trim piece will be the narrow type shown below.



## Narrow Style Metal Trim Strip Removal:

You need to remove the narrow metal strips on your doors (also known as channels). These are the metal pieces that the rubber scrapers are attached to at the base of the window. It's best to work on one door at a time.

For the front door, you will most likely **NOT** need to remove the mirror (depending on the model year and how much room there is below and behind the mirror), but removing the mirror or loosening it may give you more room to work on some models.



If the metal trim strip you are removing is the **narrow style**, open the door and you will see a small metal tab that is bent over the door frame at each end of the metal trim strip.

On front doors for later 240's (built after 1986), there is a tab at the rear only, with the front end tucked under the mirror. Carefully, use a flat screwdriver to bend these tabs out just a little and away from the door. It will not take much bending.

Now place the blade of a flat screwdriver or a strong plastic trim tool under the metal strip near the rear of the door.

**You should be very careful to avoid scratching or chipping your paint**, so you might place a piece of cardboard or plastic between the tool and your paint. Carefully pry the strip up just a little, slowly working along the strip, until it can be lifted free from the door.



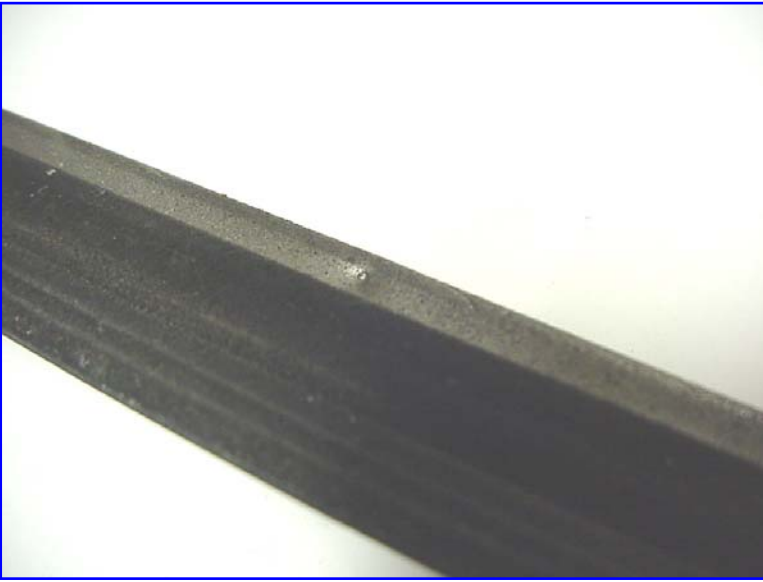
### **Wide Metal Trim Strip Removal:**

(1982 to 1985 GL models) The wide metal strip on each door will not have a small metal tab on each end. This type of trim is also fixed to the outer door skin with adhesive. To remove it, you will simply place a flat tool under the strip and carefully pry up slightly, slowly working along its length. You should work very slowly and carefully, even though some force will be required. Be especially careful with the very narrow bright chrome strip on the outer edge of this trim piece. If you pry under that part, it will come off and you will damage some of the small plastic mounting clips that hold it on.



## Removing/Replacing the Rubber Scraper Molding on Metal Trim Strip:

Once you have a metal trim strip removed, examine it.



The old rubber scraper is designed to slide out from either end of the metal channel, however the metal is "pinched" or "stamped", usually in **three** places to hold the rubber scraper in place. The photos below show the **back** or **felt** side of the rubber scraper. The left photo shows the "pinch", which looks like a dimple.

You will need to force a flat blade screwdriver into the metal channel at the "pinch" between the metal and the rubber and pry it open slightly by twisting the screwdriver. This step takes a bit of force, so be careful not to shove your screwdriver through your hand.

**Gloves are recommended.**

**NOTE:** When you force the screwdriver into the channel, your old hard rubber scrapers will likely crack and split, so don't be too alarmed at this. Once all three "pinches" have been opened slightly, the old rubber scraper can be slid out. A little soapy water or spray lubricant will help if it's tight but it should slide out without too much force.



After sliding the old rubber scraper out of the channel, slide the new one in (felt facing the same direction... toward the glass). If it's tight, some soapy water or water-based cleaner (such as Simple Green) will help it slide in easier. Do not use an oil-based lubricant, since it won't evaporate like the water-based cleaner, and it may leave messy streaks on your glass.

If you find need to stretch the rubber scraper a little to reach the ends (common if installing used pieces), it is best to do it before inserting it into the channel. To stretch the rubber, simply give them some strong tugs in a few places. Do a little at a time and check your measurement.

After you slide the new rubber scraper into the channel, You may use some pliers or a punch and hammer to pinch the channel again in a few places so the scraper stays in place. Also if you have one, a spring-loaded automatic center punch works very well for this step. This is not absolutely critical, so do your best. Pinching the channel tightly will help to hold it in place from sliding sideways, but it will not pull out of the top.

Re-installing the metal strips on the doors is the reverse of the removal process. They can be pushed down onto the doors with your hand or a little tapping with a rubber mallet or a hammer gently on a wooden block to seat them. A little lubricant sprayed or wiped on the top of the door metal area that is receiving the channel will help seat it easier.

When done, you might treat the rubber with a protectant. I prefer a little Vinylex on a rag. Keep the protectant off of the felt side, or it will streak your windows.

If you have discovered any tricks to making this job easier and you would like to share them, please contact Dave Barton at [dbarton@linkline.com](mailto:dbarton@linkline.com).