

Installation of 700/900 Exterior Window Scraper Moldings

By Dave Barton

These instructions will guide you through the installation of a set of outer window scrapers on your 700/900 Volvo. This is a very simple procedure and if you are an experienced Volvo wrencher, then it might take you 20 minutes for each door.

For the 700/900 4-door model (sedan or wagon), the scraper pieces will come in **two different lengths**. The longer ones go on the front doors and the shorter ones go on the rear doors.

These are being supplied to you slight longer than needed. This way you may trim them down to a more precise fit.



1983 to 1988 models have a trim piece that extends under the mirror. If you have one of these, you will need to remove the mirror before proceeding.



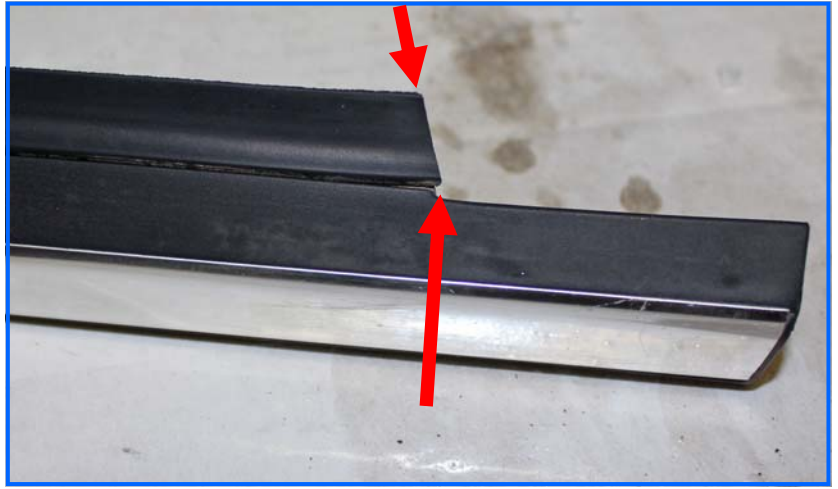
Here is a photo of the post-1988 type trim piece, which stops at the mirror. The mirror does not need to be removed for these models.



Begin by gently prying the top trim piece off of the door. You may want to place something under your pry tool to protect your paint. Then lift the trim piece off. Repeat for each door.



Before going further, take a few minutes to inspect your trim pieces. You may find some of the scraper ends are cut at an angle (see below photos). You should mark the position of the end of each scraper using tape or other means, so you can position the new scraper in the same place. Also become familiar with how the scraper fits into the metal channel.



While you might be tempted to remove the old scrapers from the trim by sliding them out of the channel, it will be much easier to simply pull them straight out.

You will find a couple of crimp spots on the channel, where the factory crimped the metal down tight onto the rubber. These will need to be opened up some before inserting new scrapers. A flat screwdriver is suggested.



You may also find a need to open up the entire channel to make fitting the new scraper easier. Try it first. Simply push the new scraper straight into the channel and work it in until it looks seated.



Remember to re-check the position of the new scraper where you placed your end marks. It might help to use some soapy water or water-based cleaner (such as Simple Green) will help seat the scraper. Do not use an oil-based lubricant, since it won't evaporate like the water-based cleaner, and it may leave messy streaks on your glass.

Once you have the new scraper seated, check the front to see if it looks even. It may help to place some packing tape along the outside of the trim and scraper to keep it in place. Once it's in place, Turn it over and use a hammer and punch (or a screwdriver) to tighten the metal channel onto the rubber, so it becomes difficult to pull out. Placing the trim piece on a folded towel to protect the finish is a good idea before beating up it.

Re-installing the metal trim strips on the doors is the reverse of the removal process. They can be pushed down onto the doors with your hand or maybe a little tapping with a rubber mallet. A little lubricant sprayed or wiped on the top of the door metal area that is receiving the channel will help seat it easier if it's very tight.

When done, you might treat the rubber with a protectant. I prefer a little Vinylex on a rag. Keep the protectant off of the felt side, or it will streak your windows.

If you have discovered any tricks to making this job easier and you would like to share them, please contact Dave Barton at dbarton@linkline.com.