



PIUTE VALLEY TRAIL

This trail runs north/south from here through Piute Valley to Piute Spring covering about 25 trail miles. This trail existed before Searchlight became a mining camp in 1897. It originally continued north to El Dorado Cañon and beyond to Las Vegas and the Salt Lake Trail. The portion of this trail to the south of here closely follows an old phone line road that was constructed in the 1960s. The phone line road is a good road and may be used in areas where the original trail is difficult or no longer visible.

PIUTE VALLEY TRAIL SOUTH TO PIUTE SPRING, 25 MILES



SEARCHLIGHT, NV
Est. 1897

164

95

Old Barnwell & Searchlight Railroad Grade

Gulch Road

Pipe Line Road

Elev 3445





PIUTE VALLEY TRAIL SOUTH TO PIUTE SPRING, 25 MILES

GOOD ROAD

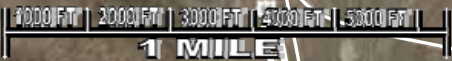
35.433271, -114.923547 JUNCTION

VERY FAINT ROAD

GOOD ROAD

35.414171, -114.923592 JUNCTION





MWD Power Line Road (AKA Gulch Road)

Elev 3150

35.414171, -114.923592
JUNCTION

Power Line Road

GOOD ROAD

FAINT ROAD



35.396231, -114.942188
JUNCTION

Old Phone Line Road

Elev 3000

GOOD ROAD

35.374262, -114.924003
JUNCTION

Piute Valley Trail

FAINT ROAD





35.396231, -114.942188
JUNCTION

MWD Power Line Road

Old Phone Line Road

FAINT ROAD

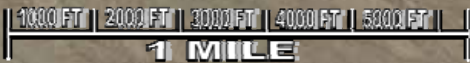
GOOD ROAD

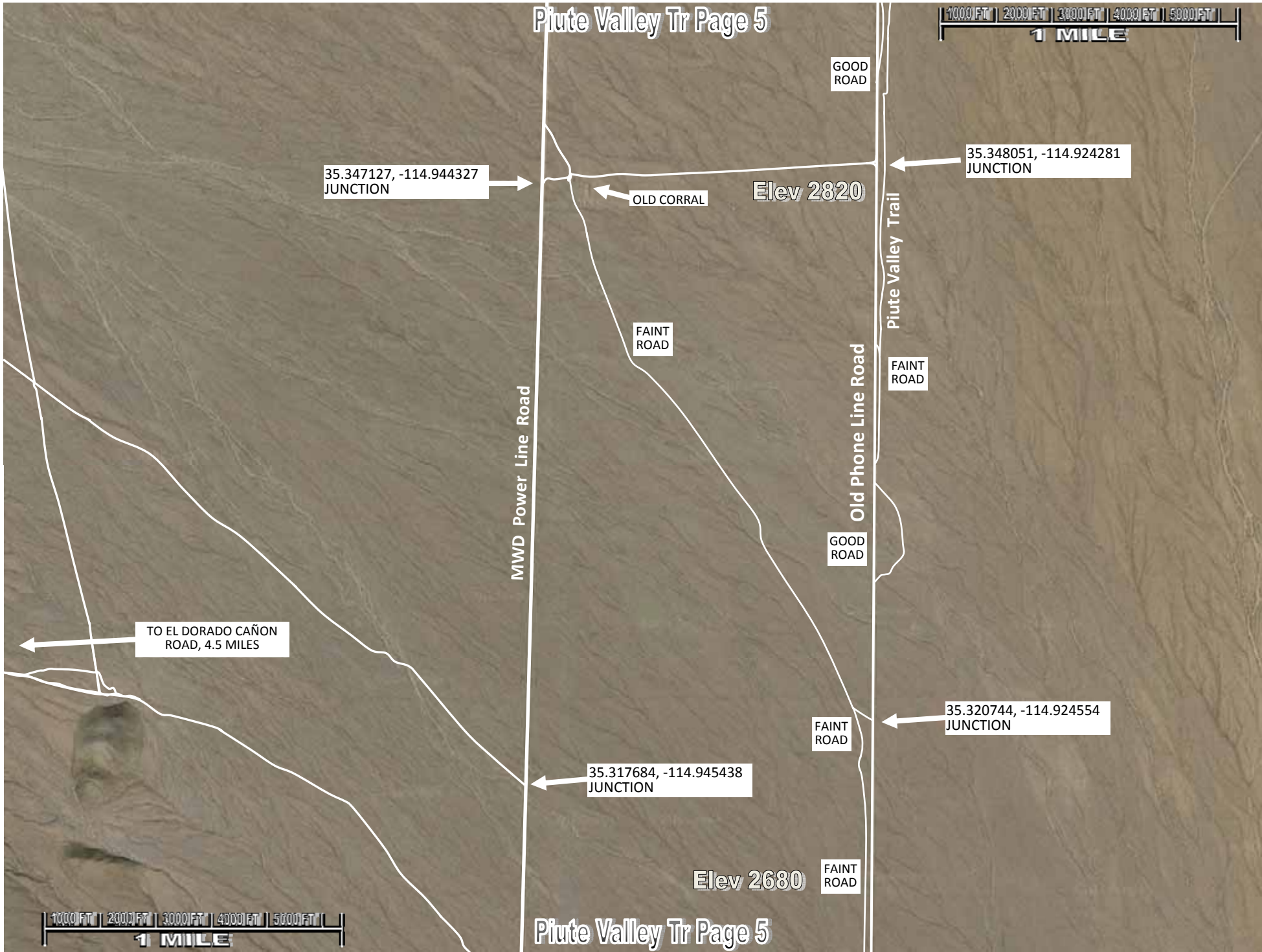
Elev 3000

Piute Valley Trail

FAINT ROAD

35.374262, -114.924003
JUNCTION





35.347127, -114.944327
JUNCTION

OLD CORRAL

Elev 2820

35.348051, -114.924281
JUNCTION

Piute Valley Trail

FAINT ROAD

FAINT ROAD

Old Phone Line Road

GOOD ROAD

TO EL DORADO CAÑON
ROAD, 4.5 MILES

35.317684, -114.945438
JUNCTION

FAINT ROAD

35.320744, -114.924554
JUNCTION

Elev 2680

FAINT ROAD





TO EL DORADO CAÑON ROAD, 4.5 MILES

GOOD ROAD

Elev 2680
FAINT ROAD

TO US 95, 2 MILES

35.306673, -114.945936
JUNCTION

FAINT ROAD

MWD Power Line Road

Piute Valley Trail

Elev 2600

35.295356, -114.924843
JUNCTION

TO CAL-NEV-ARI, NV AND US 95, 2 MILES

Old Phone Line Road

GOOD ROAD

FAINT ROAD

Elev 2460

TO US 95, 2.5 MILES

Old Homestead Road





FAINT ROAD

Elev 2600

35.295356, -114.924843
JUNCTION

GOOD ROAD

TO CAL-NEV-ARI, NV
AND US 95, 2 MILES

MWD Power Line Road

Old Phone Line Road

Piute Valley Trail

FAINT ROAD

TO US 95, 2.5 MILES

Old Homestead Road

Elev 2460

35.269050, -114.925126
JUNCTION

GOOD ROAD

OLD CORRAL

FAINT ROAD

NEVADA
CALIFORNIA

35.263126, -114.947851
JUNCTION



Elev 2430



CATTLE GRATE

GOOD ROAD

FAINT ROAD

TO EL DORADO CAÑON ROAD.
7 MILES THROUGH WINDING CANYONS.

NEVADA
CALIFORNIA

Piute Valley Trail

FAINT ROAD

35.241214, -114.948762
JUNCTION 150 FEET SOUTH
OF HIGH TOWER. FOURTH
TOWER SOUTH OF STATE
LINE.

CATTLE GRATE

FAINT ROAD

35.238018, -114.948912
JUNCTION AT FIFTH HIGH
POWER LINE TOWER SOUTH
OF STATE LINE.

35.236873, -114.925455
JUNCTION

MWD Power Line Road

Old Phone Line Road

TO US 95,
6 MILES

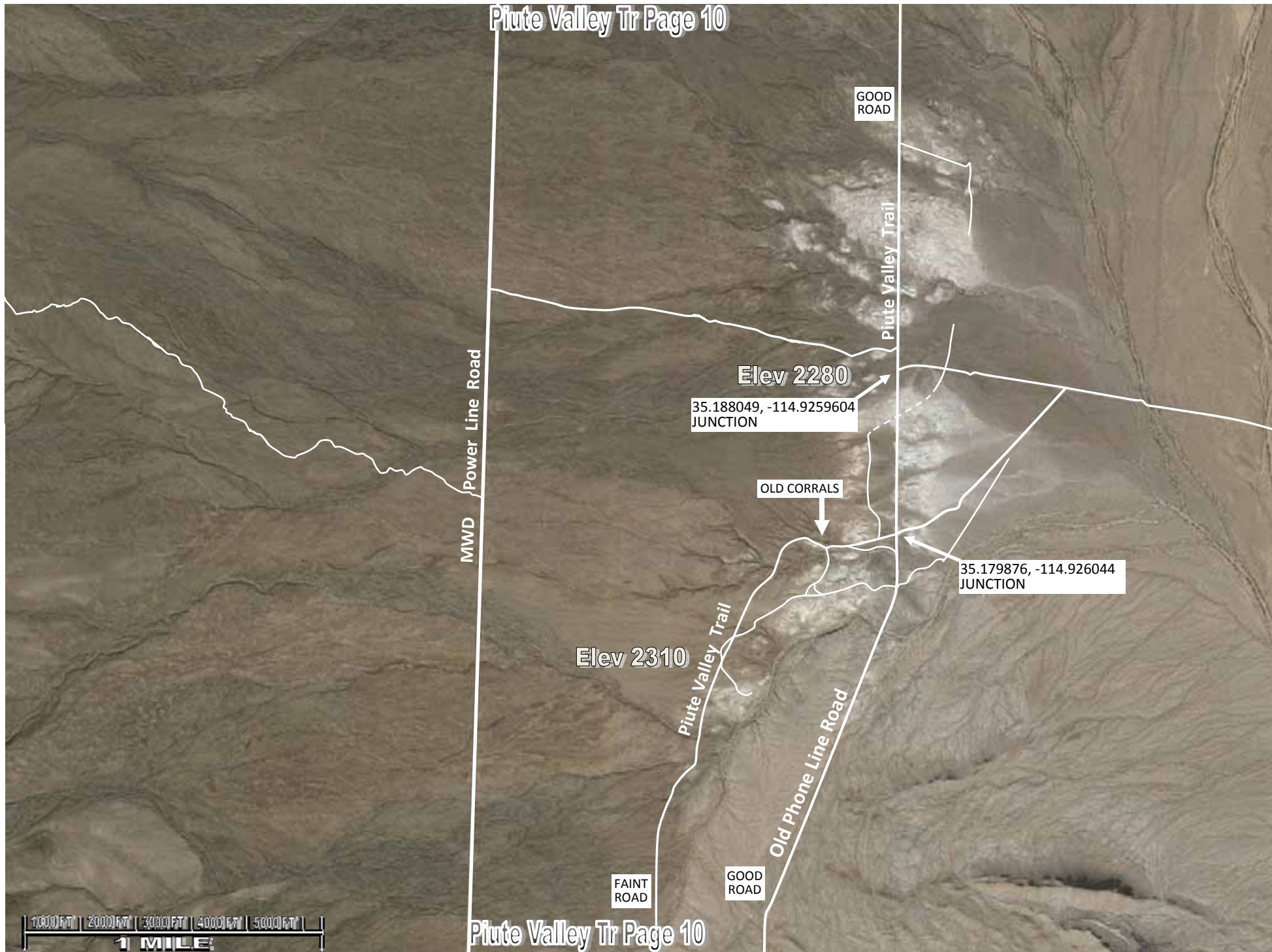
FAINT ROAD
LOST

GOOD ROAD

Elev 2310







PIUTE RANGE

35.152117, -114.952488
JUNCTION

ROAD TO NORTH
STARTS TO
BECOME FAINT.



Elev 2350

35.154167, -114.934417
JUNCTION

OLD CORRAL

35.153201, -114.941913
JUNCTION

Piute Valley Trail

WELL USED
ROAD

MWD Power Line Road

Old Phone Line Road

35.127532, -114.953531
JUNCTION

Elev 2440

NORTH TO SEARCHLIGHT,
25 MILES

WELL USED
ROAD

Mi 116.8/23
35.115020, -114.985260
FORT PIUTE RUINS

ROAD TO WEST IS
CLOSED TO VEHICLES

PIUTE SPRING
35.110825, -114.996066

Elev 3000

Mojave Road

JEDEDIAH SMITH
BUTTE

Mojave Road

TO US 95, 7 MILES

