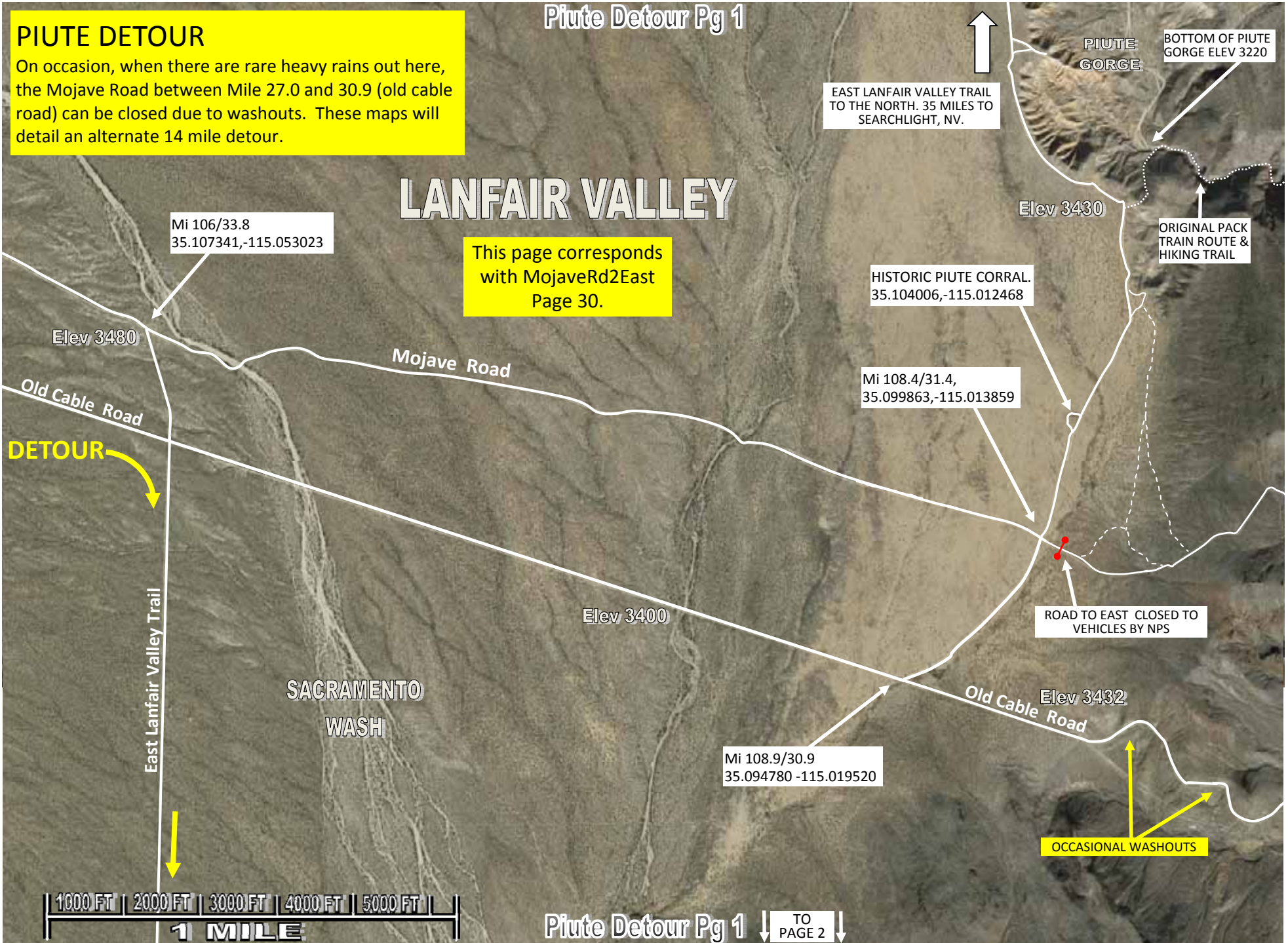


PIUTE DETOUR

On occasion, when there are rare heavy rains out here, the Mojave Road between Mile 27.0 and 30.9 (old cable road) can be closed due to washouts. These maps will detail an alternate 14 mile detour.

LANFAIR VALLEY

This page corresponds with MojaveRd2East Page 30.





East Lanfair Valley Trail

35.066575,-115.052301
INTERSECTION WITH
SACRAMENTO WASH

SACRAMENTO
WASH

Elev 3280

35.062733,-115.048303
INTERSECTION WITH
EASTBOUND TRAIL

DETOUR

Elev 3300

FAIR ROAD

GOOD ROAD

Elev 3420





DETOUR

Elev 3300

35.062733,-115.048303
INTERSECTION WITH
EASTBOUND TRAIL

GOOD ROAD

Elev 3420

FAIR ROAD

Elev 3300

**Tungsten
Flat**

East Lanfair Valley Trail

NO ROAD.
TRAIL FOLLOWS
UNIMPROVED WASH.

Elev 3290

35.057580,-115.0447541
INTERSECTION WITH
WESTBOUND TRAIL

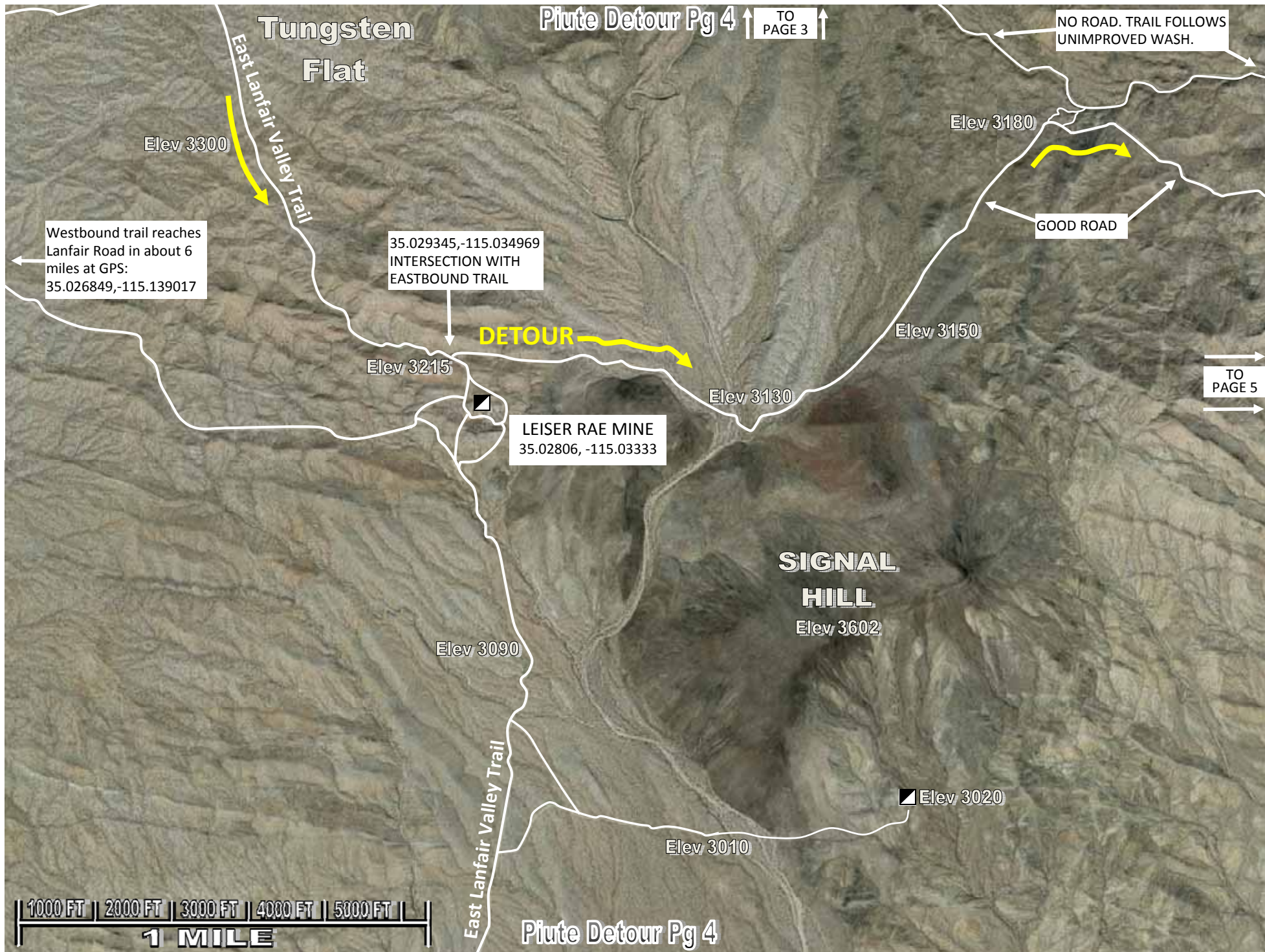
Elev 3300

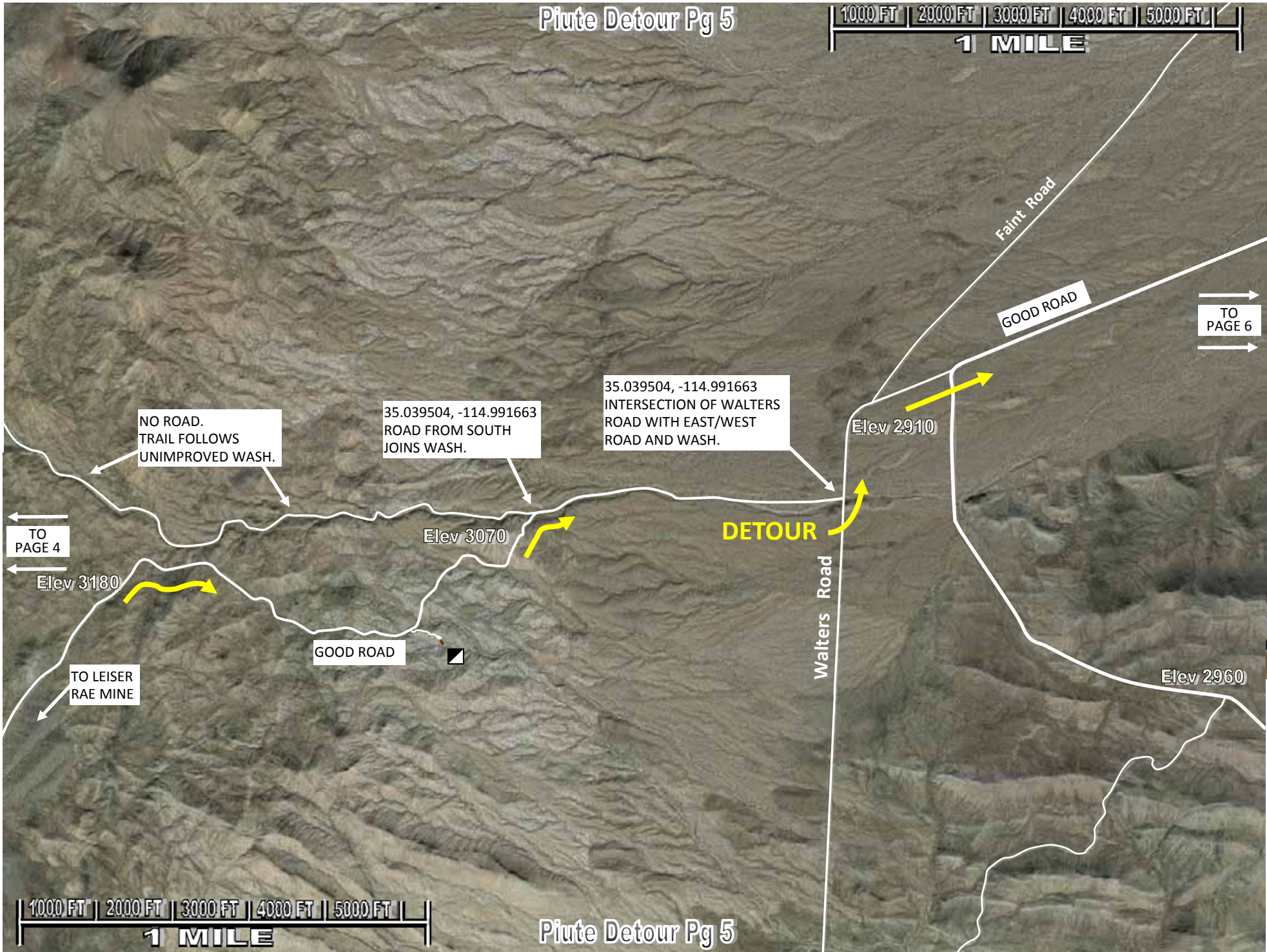
Elev 3180

GOOD ROAD

GOOD ROAD







NO ROAD.
TRAIL FOLLOWS
UNIMPROVED WASH.

35.039504, -114.991663
ROAD FROM SOUTH
JOINS WASH.

35.039504, -114.991663
INTERSECTION OF WALTERS
ROAD WITH EAST/WEST
ROAD AND WASH.

TO
PAGE 4

Elev 3180

TO LEISER
RAE MINE

GOOD ROAD

Elev 3070

DETOUR

Elev 2910

Walters Road

GOOD ROAD

Faint Road

TO
PAGE 6

Elev 2960



Piute Detour Pg 7

Elev 2455



Old Cable Road

DETOUR

Old Water Pipe Line Road

OCCASIONAL WASHOUTS

Mi 112.8/27
 35.091154,-114.955017
 MWD POWER LINE ROAD
 INTERSECTS WITH CABLE ROAD.

This page corresponds
 with MojaveRd2East
 Pages 31-32.

MWD Powerline Road

Old Phone Line Road

PIUTE DETOUR

On occasion, when there are rare heavy rains out here, the Mojave Road between Mile 27.0 and 30.9 (old cable road) can be closed due to washouts. These maps will detail an alternate 14 mile detour.



Elev 2670

Piute Detour Pg 7

TO PAGE 6