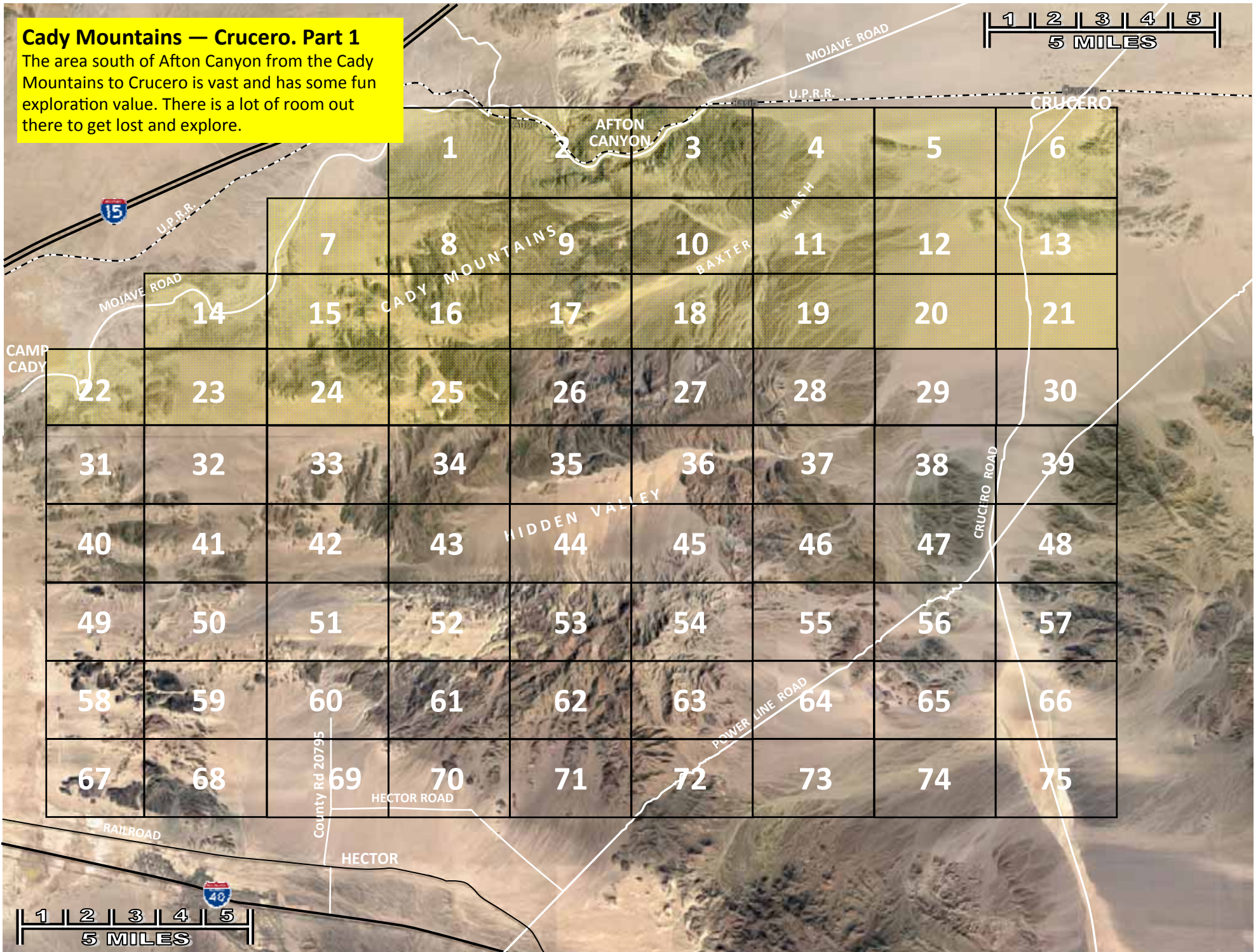
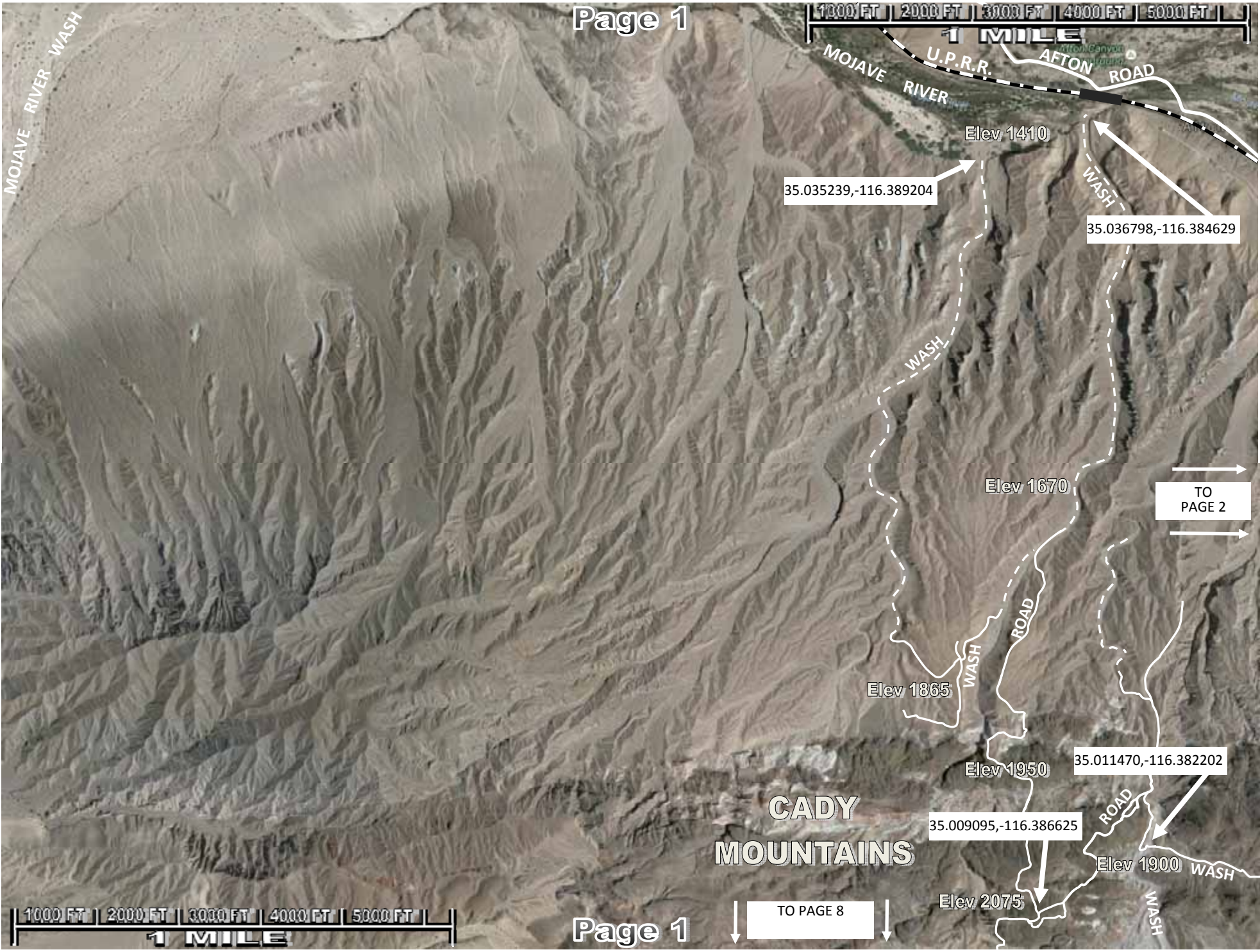


# Cady Mountains — Crucero. Part 1

The area south of Afton Canyon from the Cady Mountains to Crucero is vast and has some fun exploration value. There is a lot of room out there to get lost and explore.







TO PAGE 8

TO PAGE 2

# CADY MOUNTAINS

35.035239, -116.389204

35.036798, -116.384629

35.011470, -116.382202

35.009095, -116.386625

Elev 1410

Elev 1670

Elev 1865

Elev 1950

Elev 1900

Elev 2075

MOJAVE RIVER WASH

MOJAVE RIVER

WASH

WASH

WASH

WASH

ROAD

ROAD

WASH

WASH

WASH





AFTON CANYON  
CAMPGROUND

U.P.R.R.

Elev 1410

35.036798,-116.384629

Elev 1340

TO  
PAGE 1

Elev 1670

TO  
PAGE 3

Afton Canyon

Elev 1325

Elev 1750

35.021076,-116.342469

CADY  
MOUNTAINS

Elev 2135

35.011470,-116.382202

Elev 1950

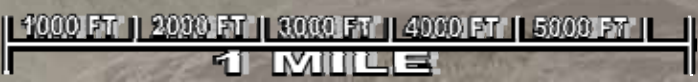
ROAD

Elev 1980

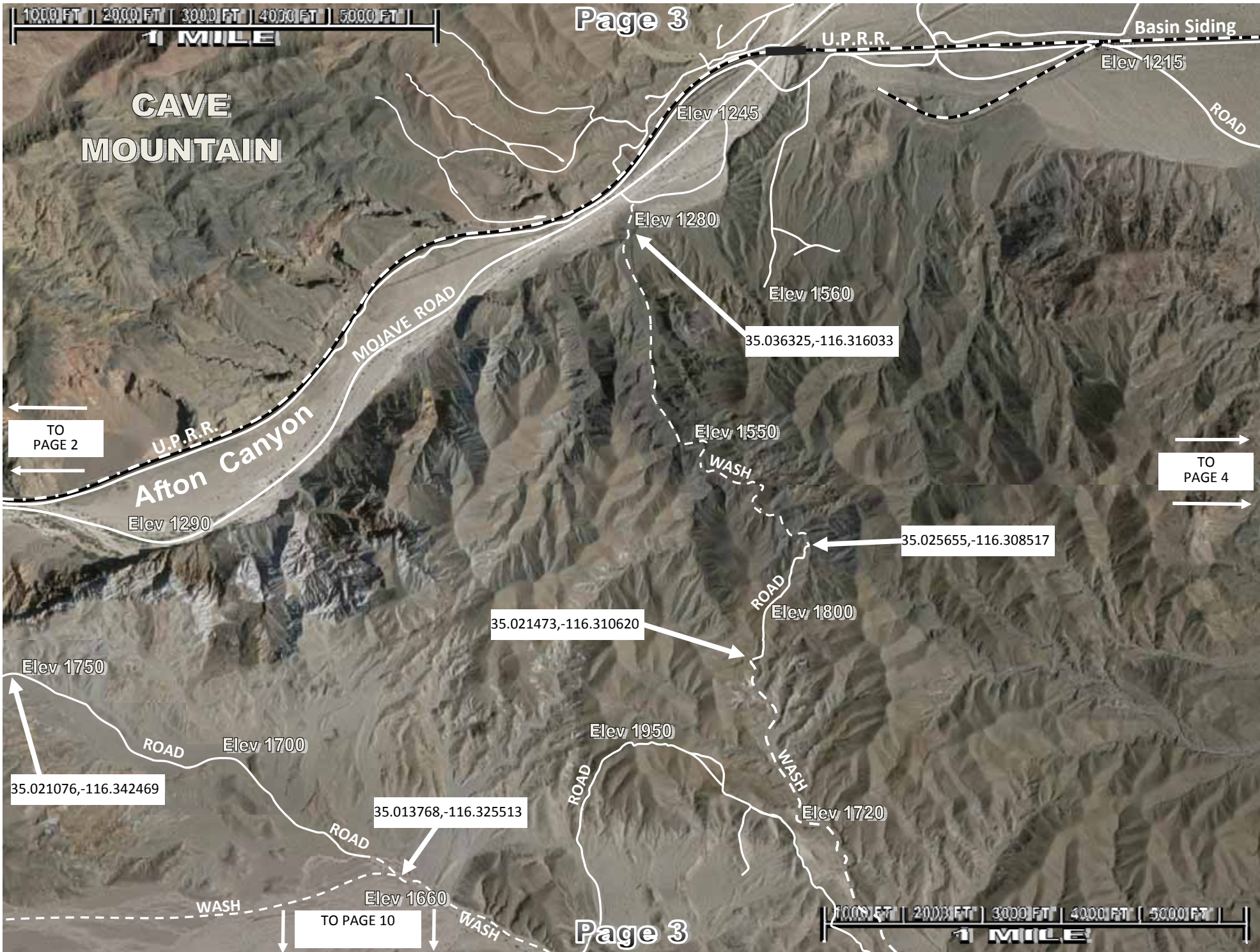
35.010843,-116.369971

Elev 1900

TO PAGE 9











AFTON CANYON 1 Mile

U.P.R.R.

ROAD

Elev 1130

Elev 1190

ROAD

TO PAGE 3

TO PAGE 5

35.025841,-116.267683

Elev 1250

Baxter Wash

Elev 1300

TO PAGE 11





U.P.R.R.

ROAD

Elev 1130

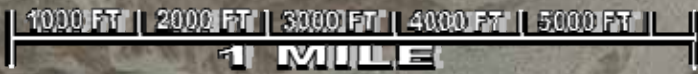
Elev 1060

ROAD

Elev 1070

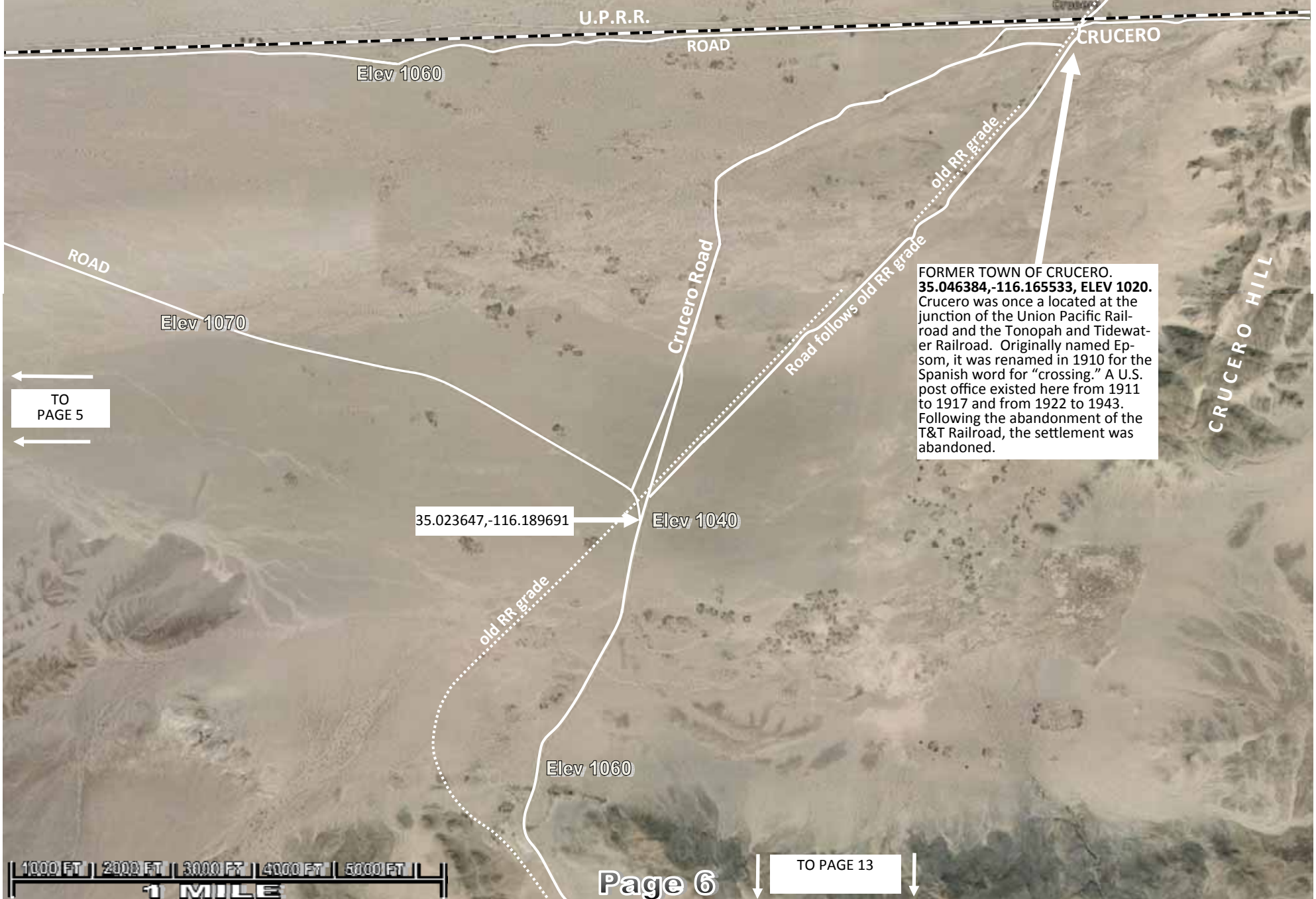
← TO PAGE 4

TO PAGE 6 →



↓ TO PAGE 12 ↓





**FORMER TOWN OF CRUCERO.**  
**35.046384,-116.165533, ELEV 1020.**  
Crucero was once a located at the junction of the Union Pacific Railroad and the Tonopah and Tidewater Railroad. Originally named Epsom, it was renamed in 1910 for the Spanish word for "crossing." A U.S. post office existed here from 1911 to 1917 and from 1922 to 1943. Following the abandonment of the T&T Railroad, the settlement was abandoned.

35.023647,-116.189691

TO PAGE 5

TO PAGE 13





Elev 1510

MOJAVE ROAD  
Mojave River Wash

35.001245,-116.469718

WILHELM WASH

WILHELM ROAD

Elev 1660

Elev 1540

JUNCTION:  
35.000126,-116.460361

Elev 1740

NINEMILE  
WATERSHOLE

JUNCTION:  
35.995003,-116.472845

Field Road

ROAD

WILHELM WASH

Elev 1990

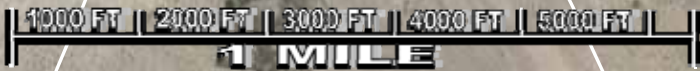
WASH

Elev 1550

Elev 1760

34.987866,-116.448505

Elev 1940



TO PAGE 8

TO PAGE 15





↑ TO PAGE 1 ↑



Elev 1900

Elev 2075

35.002500, -116.386019

Elev 2210

34.999818, -116.388428

TO PAGE 9

CADY MOUNTAINS

Elev 2350

34.997472, -116.384759

Elev 2310

Elev 2400

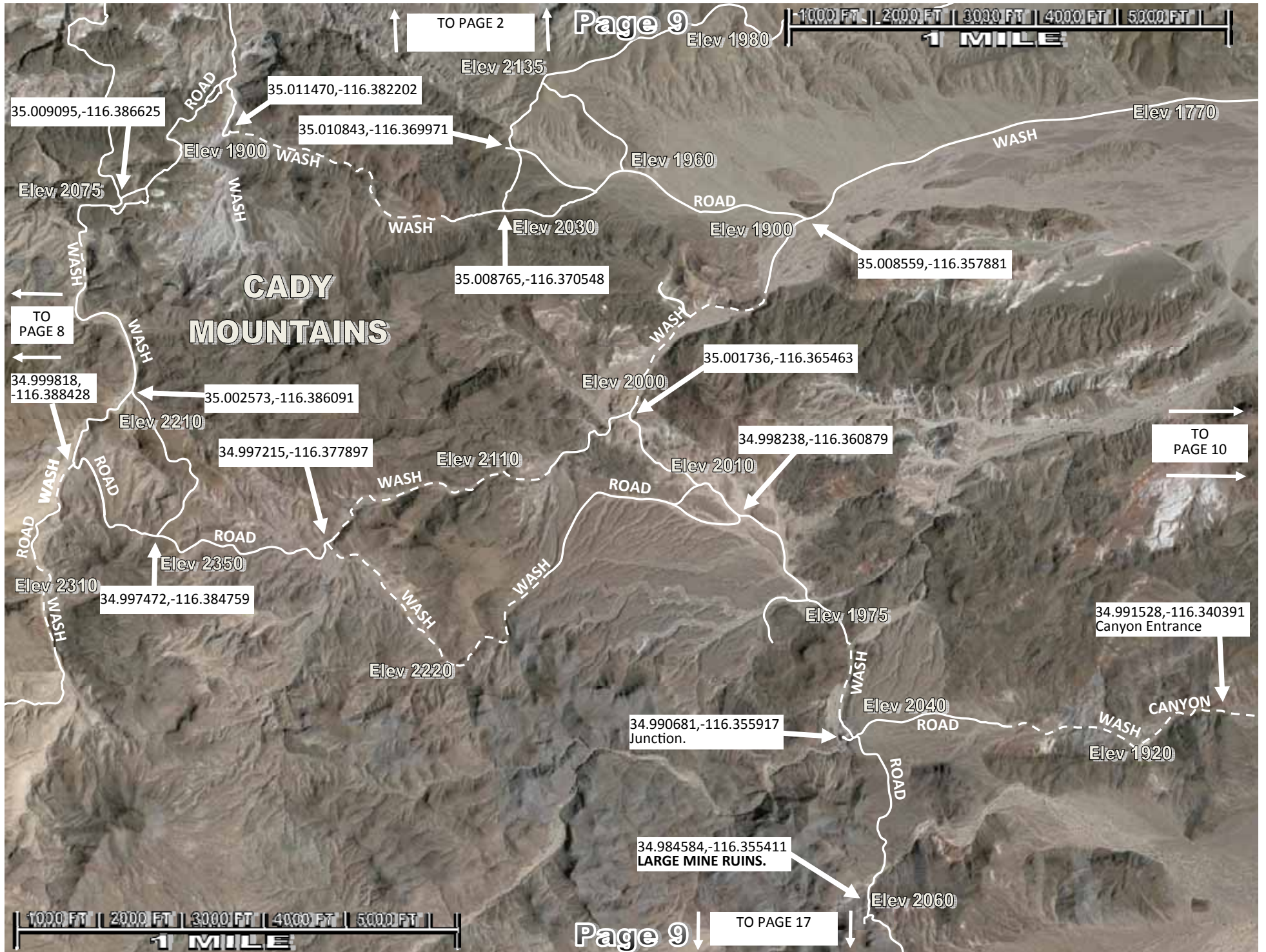
Elev 2440

TO PAGE 7

TO PAGE 16









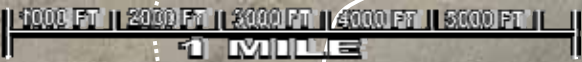








↑ TO PAGE 5 ↑



MESQUITE SPRING

Elev 1070

Crucero Road

THE MOJAVE DESERT MEGAPHONE  
35.0054, -116.1964



Elev 1150

TO PAGE 13

UNKNOWN STRUCTURES

old RR grade

Crucero Road

Elev 1170

← TO PAGE 11



↓ TO PAGE 20 ↓



TO PAGE 6



MESQUITE SPRING

RR grade

Elev 1070

MESQUITE HILLS

Mesquite Hills

THE MOJAVE DESERT MEGAPHONE

35.0054, -116.1964



TO PAGE 12

UNKNOWN STRUCTURES

UNKNOWN STRUCTURES

FENCE LINE

Elev 1150

Elev 1150

Road continues east and southeast for 4.8 miles to junction with power line road at 34.977011, -116.118567

34.995811, -116.189442

UNKNOWN STRUCTURES

old RR grade

Crucero Road

Elev 1170



TO PAGE 21



NINEMILE  
WATERHOLE  
PAGE 7

JUNCTION:  
35.995003,-116.472845

Elev 1540

Field Road

Mojave River Wash

NINEMILE ROAD

Elev 1570

TO  
PAGE 15

Elev 1560

Elev 1830

Elev 1650

Elev 1870

34.966022,-116.469803

Elev 1810

Elev 1960

TO PAGE 23

Elev 1840











TO PAGE 8



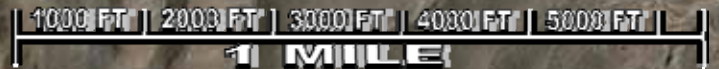
TO PAGE 15

TO PAGE 17

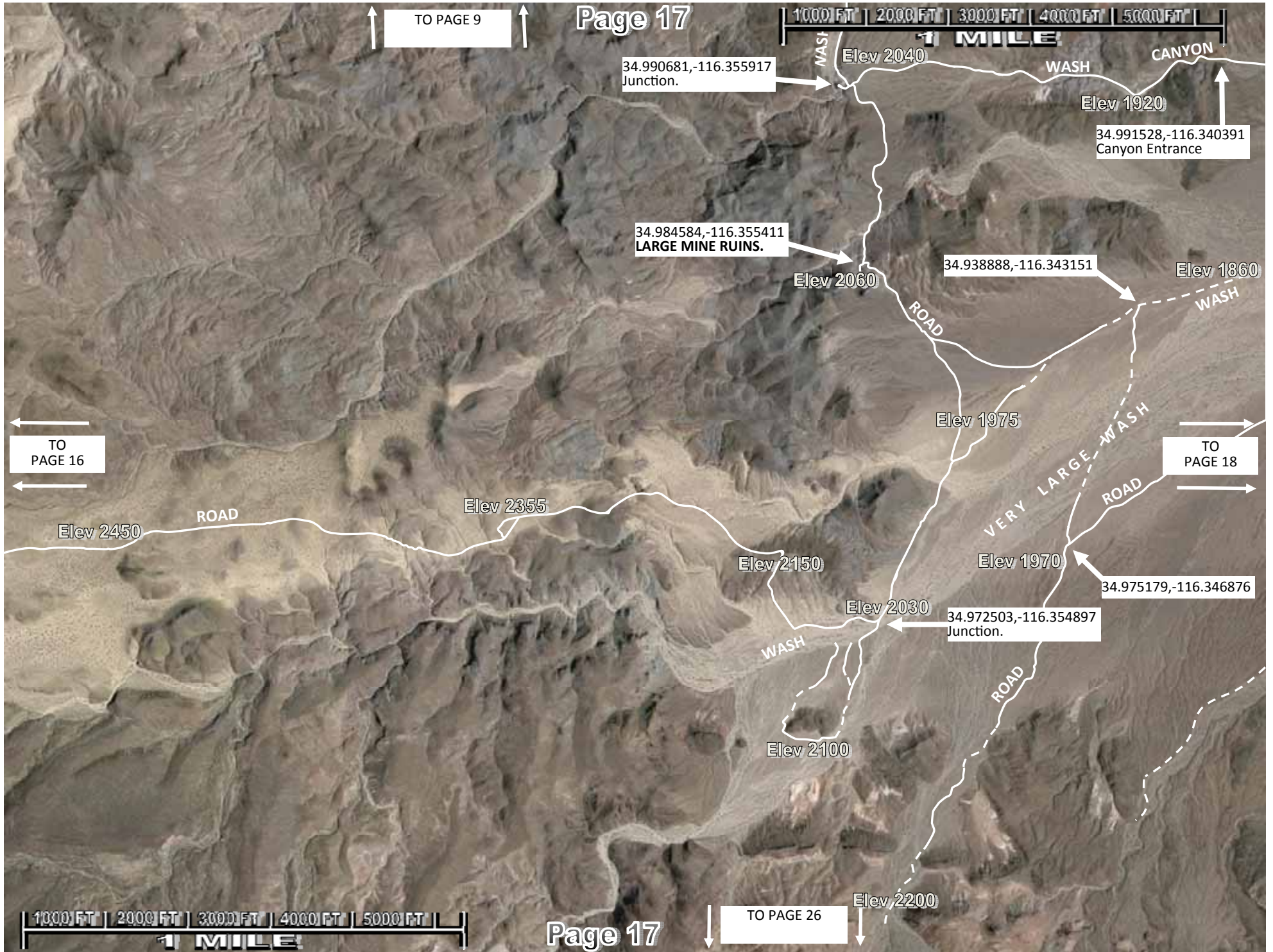
34.973518, -116.426522  
Junction with wash.

34.972434, -116.424157  
Junction with wash.

TO PAGE 25















↑ TO PAGE 11 ↑

Page 19

1000 FT | 2000 FT | 3000 FT | 4000 FT | 5000 FT |  
1 MILE

Elev 1700

Elev 1670

Elev 1440

← TO PAGE 18 ←

→ TO PAGE 20 →

Elev 1850

Elev 1590

1000 FT | 2000 FT | 3000 FT | 4000 FT | 5000 FT |  
1 MILE

Page 19

↓ TO PAGE 28 ↓



↑ TO PAGE 12 ↑



Elev 1440

Elev 1330

Elev 1230

← TO PAGE 19 →

→ TO PAGE 21 ←

Elev 1440

HIDDEN VALLEY WASH



↓ TO PAGE 29 ↓













↑ TO PAGE 14 ↑

Page 23

1000 FT | 2000 FT | 3000 FT | 4000 FT | 5000 FT |  
1 MILE

34.966022, -116.469803

ROADS  
Elev 1960

Elev 1840

NINEMILE ROAD

34.962392, -116.484680

ROAD

Elev 1850

TO PAGE 22

Elev 2160

Elev 2220

TO PAGE 24

Elev 2040

34.949663, -116.482134

ROAD

1000 FT | 2000 FT | 3000 FT | 4000 FT | 5000 FT |  
1 MILE

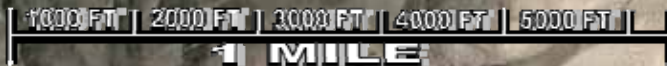
Page 23

↓ TO PAGE 32 ↓



↑ TO PAGE 15 ↑

Page 24



34.966022,-116.469803

ROADS

Elev 1960

Elev 2160

Elev 2220

ROAD

← TO PAGE 23 ←

→ TO PAGE 25 →



Page 24

↓ TO PAGE 33 ↓



