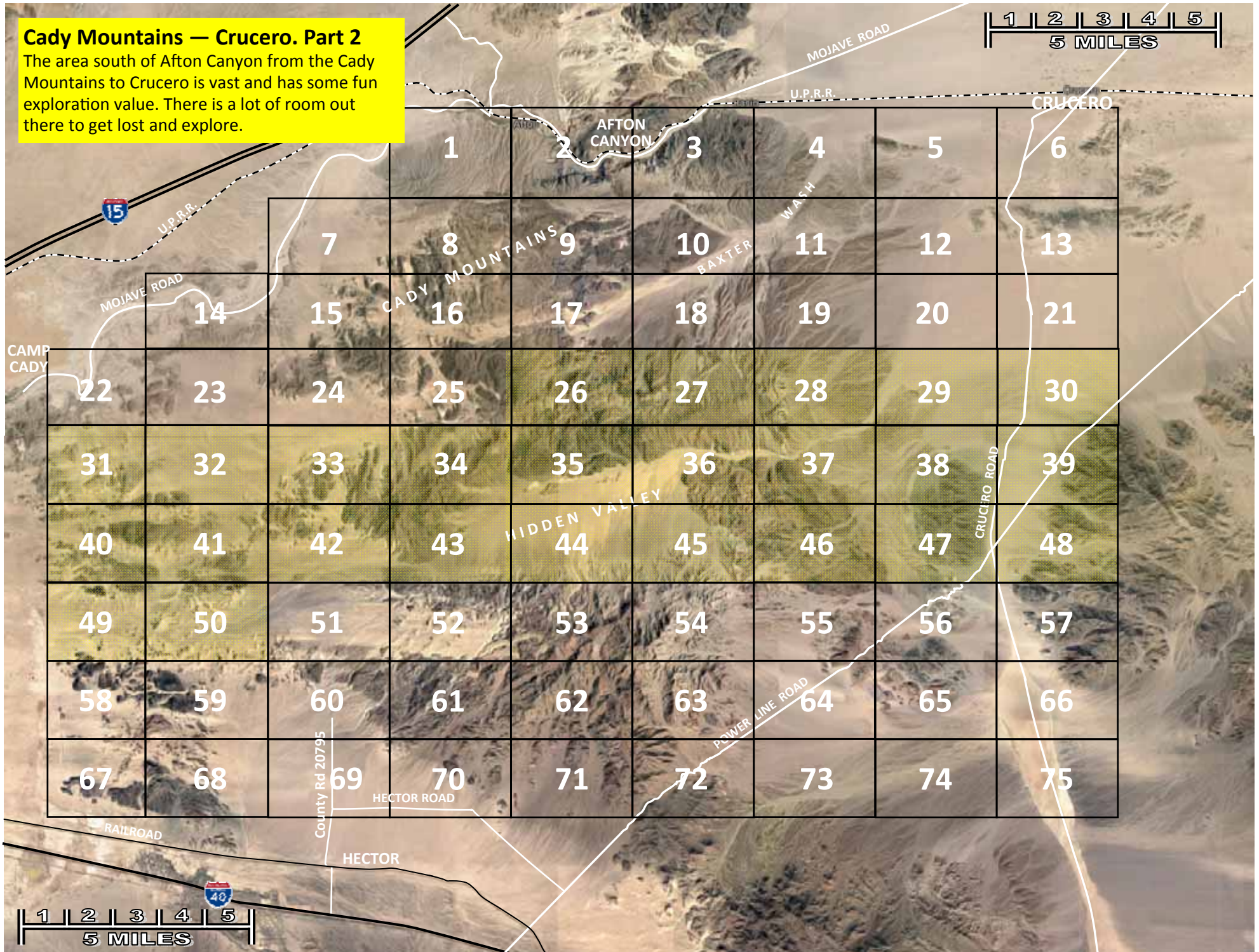


Cady Mountains — Crucero. Part 2

The area south of Afton Canyon from the Cady Mountains to Crucero is vast and has some fun exploration value. There is a lot of room out there to get lost and explore.



Elev 2120

Elev 2250

Elev 2760

Elev 2940



Elev 2380

WASH

34.945760, -116.336326

Elev 2870

↑ TO PAGE 17 ↑

Page 27



34.967469, -116.314234

Elev 2010

ROAD

← TO PAGE 26

TO PAGE 28 →

Elev 2170

34.950458, -116.323107

Elev 2285
WASH

← TO MYSTERY SITE
PAGE 26

↓ TO PAGE 36 ↓

Page 27



↑ TO PAGE 18 ↑

Page 28



Elev 1760

← TO PAGE 27 ←

→ TO PAGE 29 →

Elev 1650

HIDDEN VALLEY WASH

Elev 1880

Page 28 ↓

↓ TO PAGE 37 ↓



↑ TO PAGE 19 ↑

Page 29



Elev 1420

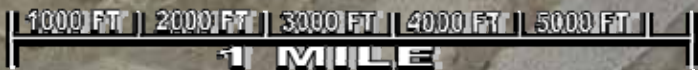
HIDDEN VALLEY WASH

← 34.956713,-116.237013

Elev 1590

← TO PAGE 28

→ TO PAGE 30



Page 29

↓ TO PAGE 38 ↓





Page 31

TO PAGE 22

Elev 1900
TO PAGE 22
TO MOJAVE RIVER
WASH

Elev 1970

TO
PAGE 30

TO
PAGE 32

Elev 2300

Elev 2160



Page 31

TO PAGE 40

↑ TO PAGE 23 ↑

Page 32



Elev 1970

Elev 2050

← TO PAGE 31 ←

→ TO PAGE 33 →

5.2 MILES TO MOJAVE RIVER WASH
NEAR CHEROKEE ROAD EXIT
PAGE 22

5.4 MILES TO MOJAVE RIVER WASH
AT NINEMILE WATERHOLE
PAGE 7

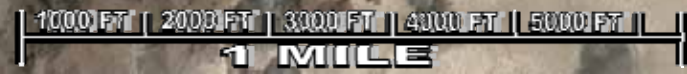
Elev 2180

34.917596,-116.486785

34.913138,-116.491021

↓ TO PAGE 41 ↓

Page 32



↑ TO PAGE 24 ↑



Elev 2540

Elev 2150

Elev 2270

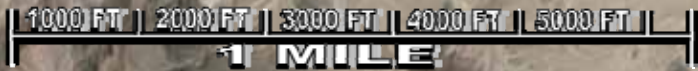
← TO PAGE 32 ←

→ TO PAGE 34 →

Elev 2520

Elev 3560

Elev 3080

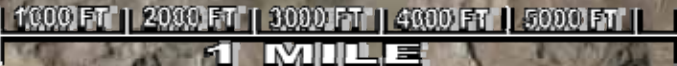


TO PAGE 42 ↓

Elev 2720

TO PAGE 25

Page 34



Elev 2830

Elev 3430

TO PAGE 33

TO PAGE 35

Cady Mountains

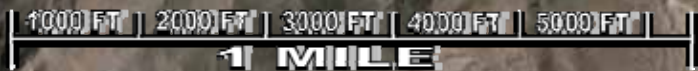
Elev 3600

Elev 2830

Old corral, possible ranch ruins.

Elev 2660

Elev 2670



Page 34

TO PAGE 43



↑ TO PAGE 26

Page 35

1000 FT | 2000 FT | 3000 FT | 4000 FT | 5000 FT |
1 MILE

← TO PAGE 34

TO PAGE 36 →

Old corral, possible ranch ruins.

HIDDEN VALLEY

1000 FT | 2000 FT | 3000 FT | 4000 FT | 5000 FT |
1 MILE

Page 35

↓ TO PAGE 44 ↓

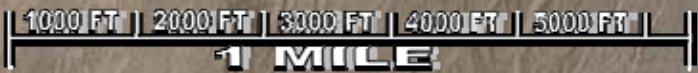
↑ TO PAGE 27 ↑



← TO PAGE 35 ←

→ TO PAGE 37 →

↓ TO PAGE 45 ↓



↑ TO PAGE 28 ↑



← TO PAGE 36 ←

→ TO PAGE 38 →



↓ TO PAGE 46 ↓



↑ TO PAGE 30 ↑



Elev 1280

Elev 1280

old RR grade

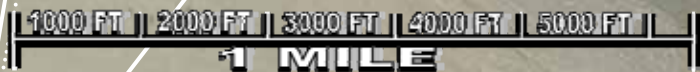
Crucero Road

Power Line Road

← TO PAGE 38 ←

Elev 1340

Elev 1480



↓ TO PAGE 48 ↓

↑ TO PAGE 31 ↑

Page 40



← TO PAGE 39 ←

→ TO PAGE 41 →

Road connects to Riverside Road in eastern Barstow at: 34.909016,-116.555300

Elev 2150

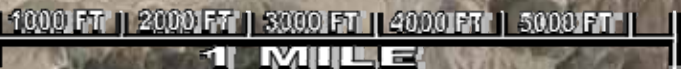
Elev 2160

Elev 2170

35.899083,-116.513153

Elev 2080

Elev 2010



Page 40

↓ TO PAGE 49 ↓



↑ TO PAGE 33 ↑



← TO PAGE 41 ←

→ TO PAGE 43 →

34.897501,-116.467533

Elev 2315

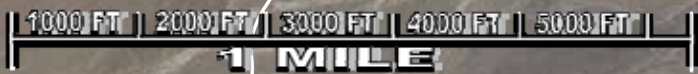
Elev 2300

To Hidden Valley →

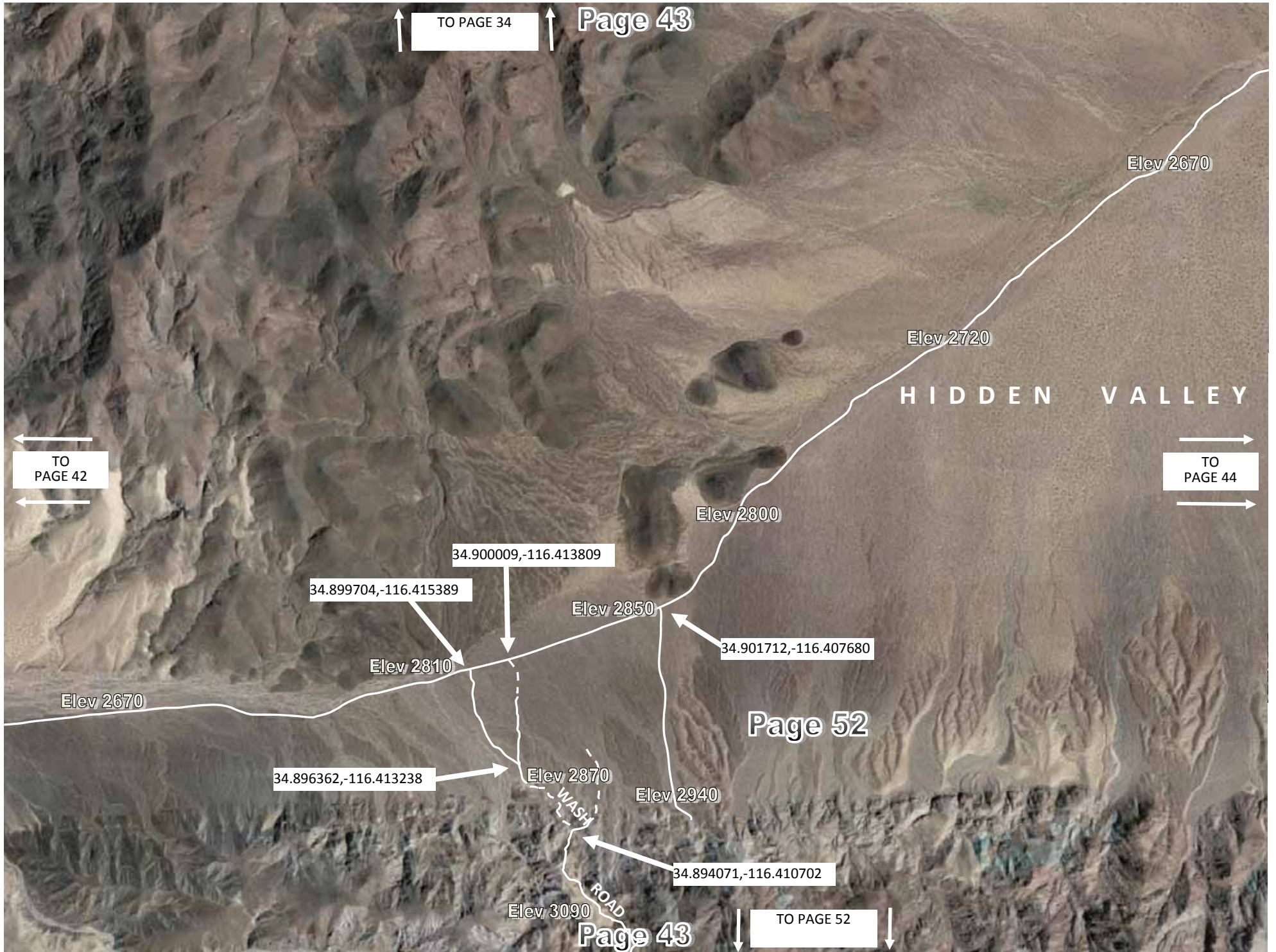
Elev 2590

Elev 2670

Elev 2275



↓ TO PAGE 51 ↓



↑ TO PAGE 34 ↑

Page 43

Elev 2670

Elev 2720

HIDDEN VALLEY

← TO PAGE 42 ←

→ TO PAGE 44 →

Elev 2800

34.900009, -116.413809

34.899704, -116.415389

Elev 2850

34.901712, -116.407680

Elev 2810

Page 52

Elev 2670

34.896362, -116.413238

Elev 2870

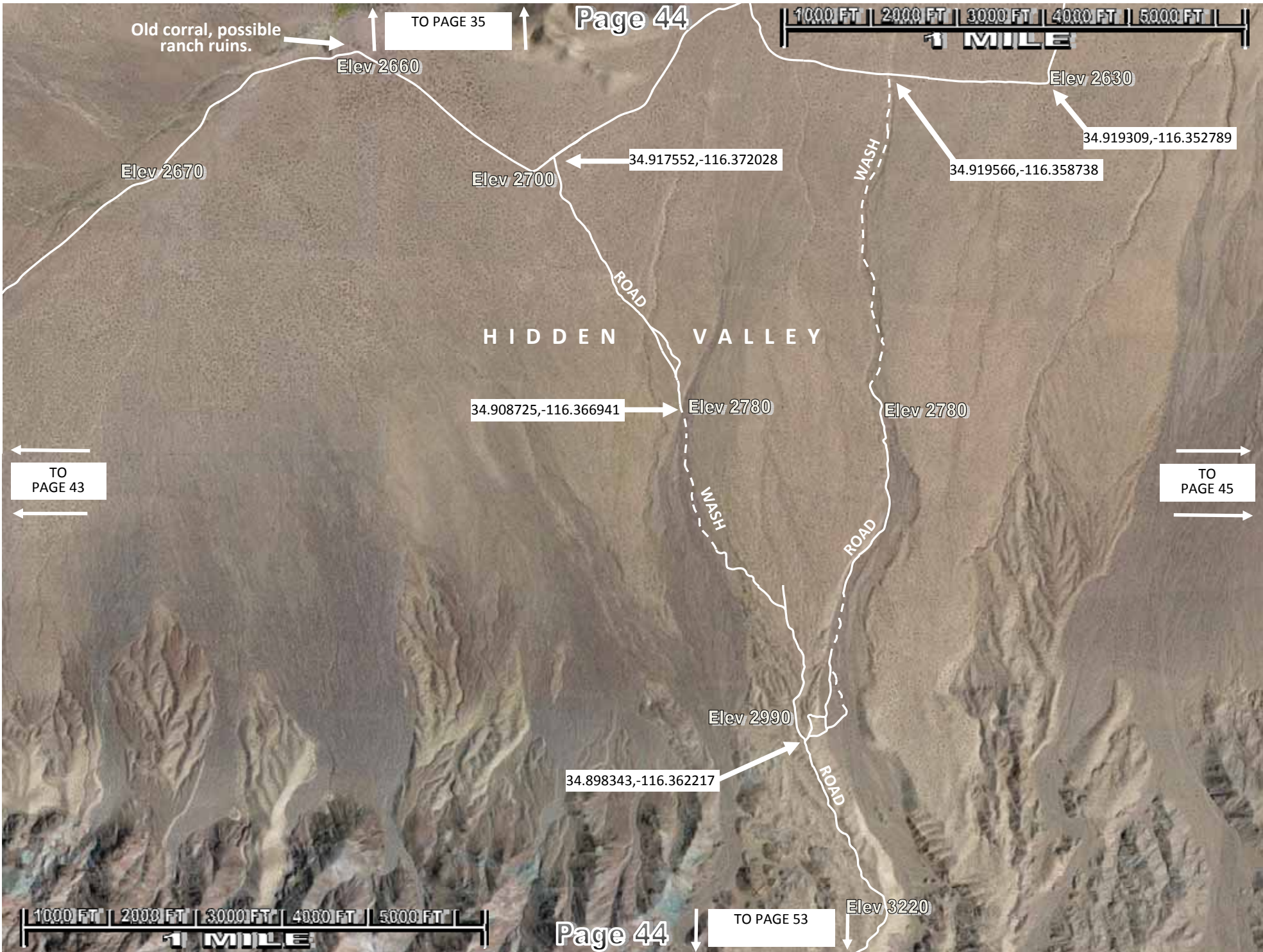
Elev 2940

34.894071, -116.410702

Elev 3090

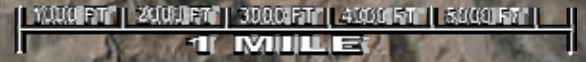
↓ TO PAGE 52 ↓

Page 43



↑ TO PAGE 36 ↑

Page 45



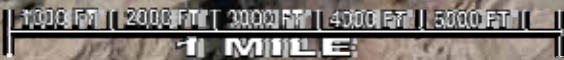
HIDDEN VALLEY

Elev 2690

← TO PAGE 44

Elev 2930

TO PAGE 46 →



Page 45 ↓

TO PAGE 54 ↓



↑ TO PAGE 37 ↑

Page 46

1000 FT | 2000 FT | 3000 FT | 4000 FT | 5000 FT |
1 MILE

Elev 1980

Elev 2280

← TO PAGE 45 ←

→ TO PAGE 47 →

Elev 2570

Elev 2300

Elev 1950

Page 46

↓ TO PAGE 55 ↓

1000 FT | 2000 FT | 3000 FT | 4000 FT | 5000 FT |
1 MILE

↑ TO PAGE 38 ↑



Elev 1340

Elev 1450

Crucero Road

old RR grade

34.905681,-116.201263

Elev 1390

TO PAGE 48

Power Line Road

Elev 1700

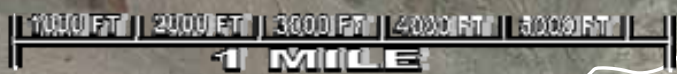
Elev 1540

Elev 1350

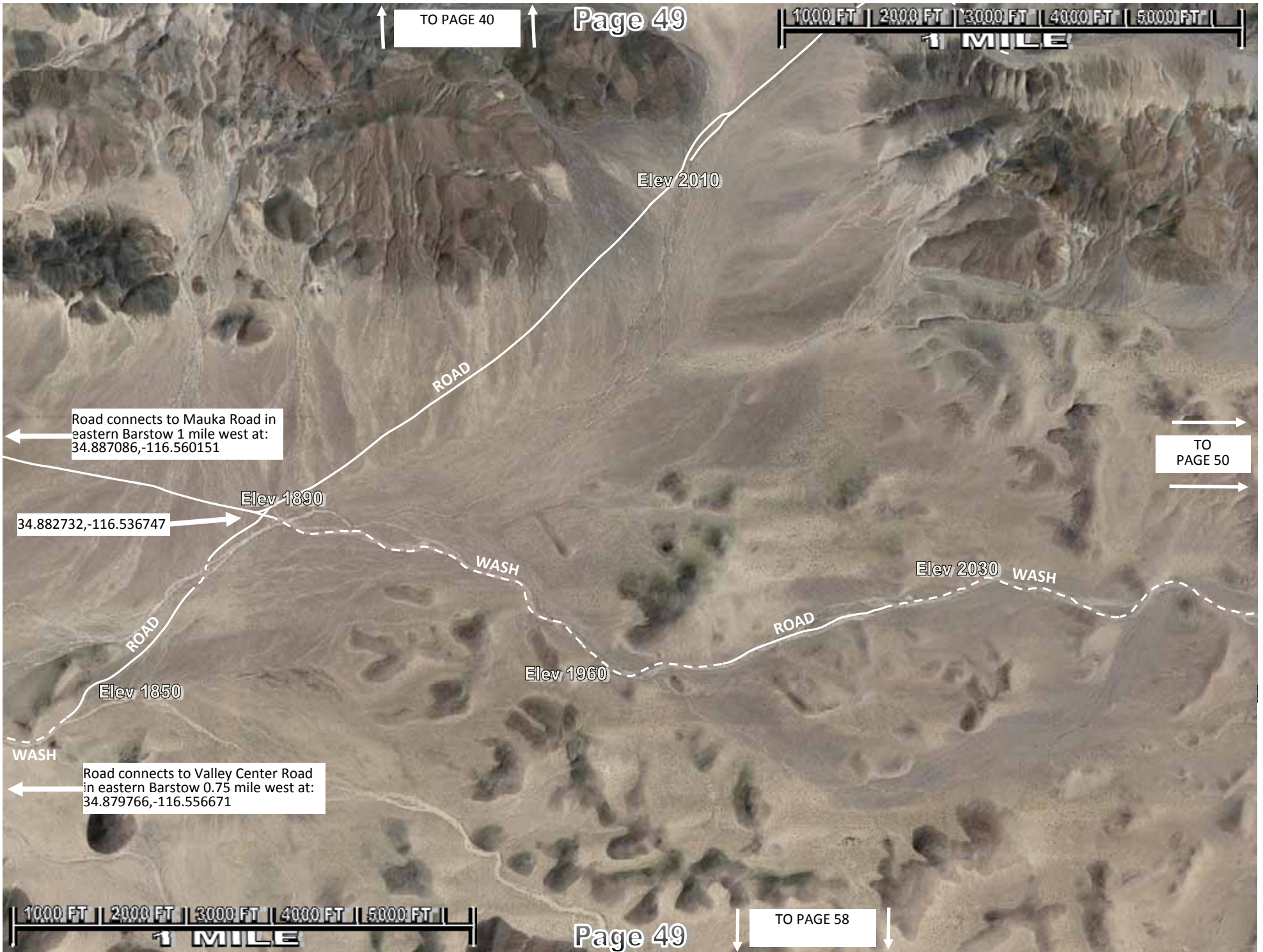
Elev 1620

TO PAGE 56

TO PAGE 46







↑ TO PAGE 40 ↑

1000 FT | 2000 FT | 3000 FT | 4000 FT | 5000 FT |
1 MILE

Elev 2010

ROAD

Road connects to Mauka Road in eastern Barstow 1 mile west at: 34.887086,-116.560151

→ TO PAGE 50 →

Elev 1890

34.882732,-116.536747

WASH

Elev 2030 WASH

ROAD

ROAD

Elev 1850

Elev 1960

WASH

Road connects to Valley Center Road in eastern Barstow 0.75 mile west at: 34.879766,-116.556671

1000 FT | 2000 FT | 3000 FT | 4000 FT | 5000 FT |
1 MILE

↓ TO PAGE 58 ↓

↑ TO PAGE 41 ↑



Elev 2320

34.897501,-116.467533

ROAD

Elev 2220

ROAD

STRUCTURES

34.885185,-116.473800

ROAD

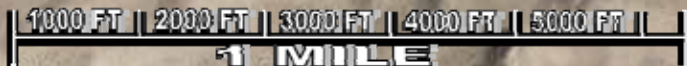
TO PAGE 51

← TO PAGE 49

Elev 2030

ROAD AND WASH

Elev 2370



↓ TO PAGE 59 ↓