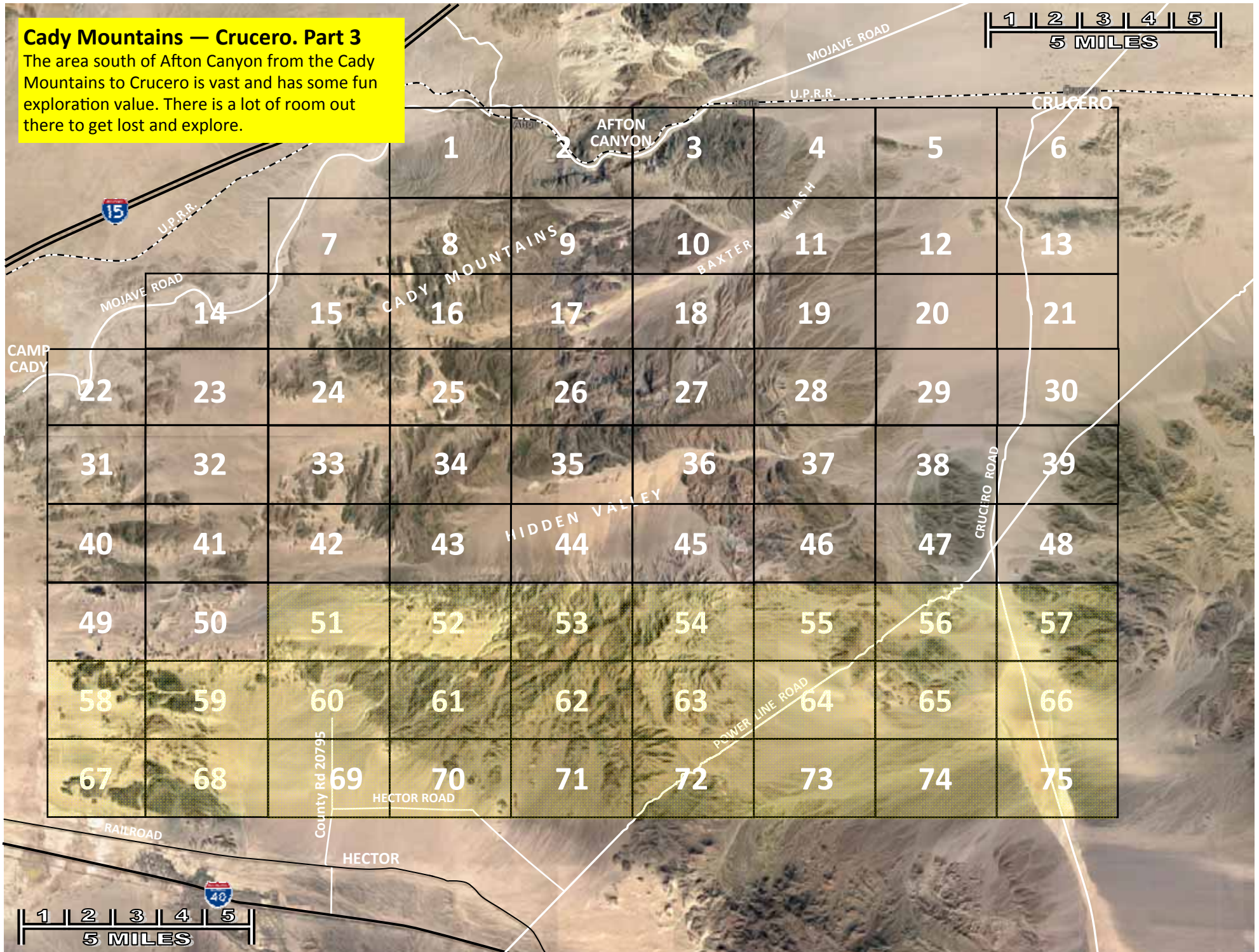


Cady Mountains — Crucero. Part 3

The area south of Afton Canyon from the Cady Mountains to Crucero is vast and has some fun exploration value. There is a lot of room out there to get lost and explore.





Elev 2340

ROAD

↑ TO PAGE 42 ↑

Page 51



34.897501, -116.467533

Elev 3080

← TO PAGE 50 ←

→ TO PAGE 52 →

ROAD

Elev 2370

34.877805, -116.452967

ROAD

Elev 2850

Elev 2520

ROAD

Elev 2970

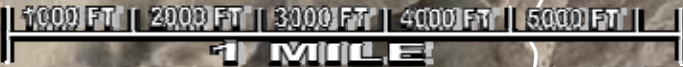
TO COUNTY ROAD 20795 AND I-40

Elev 2330

ROAD

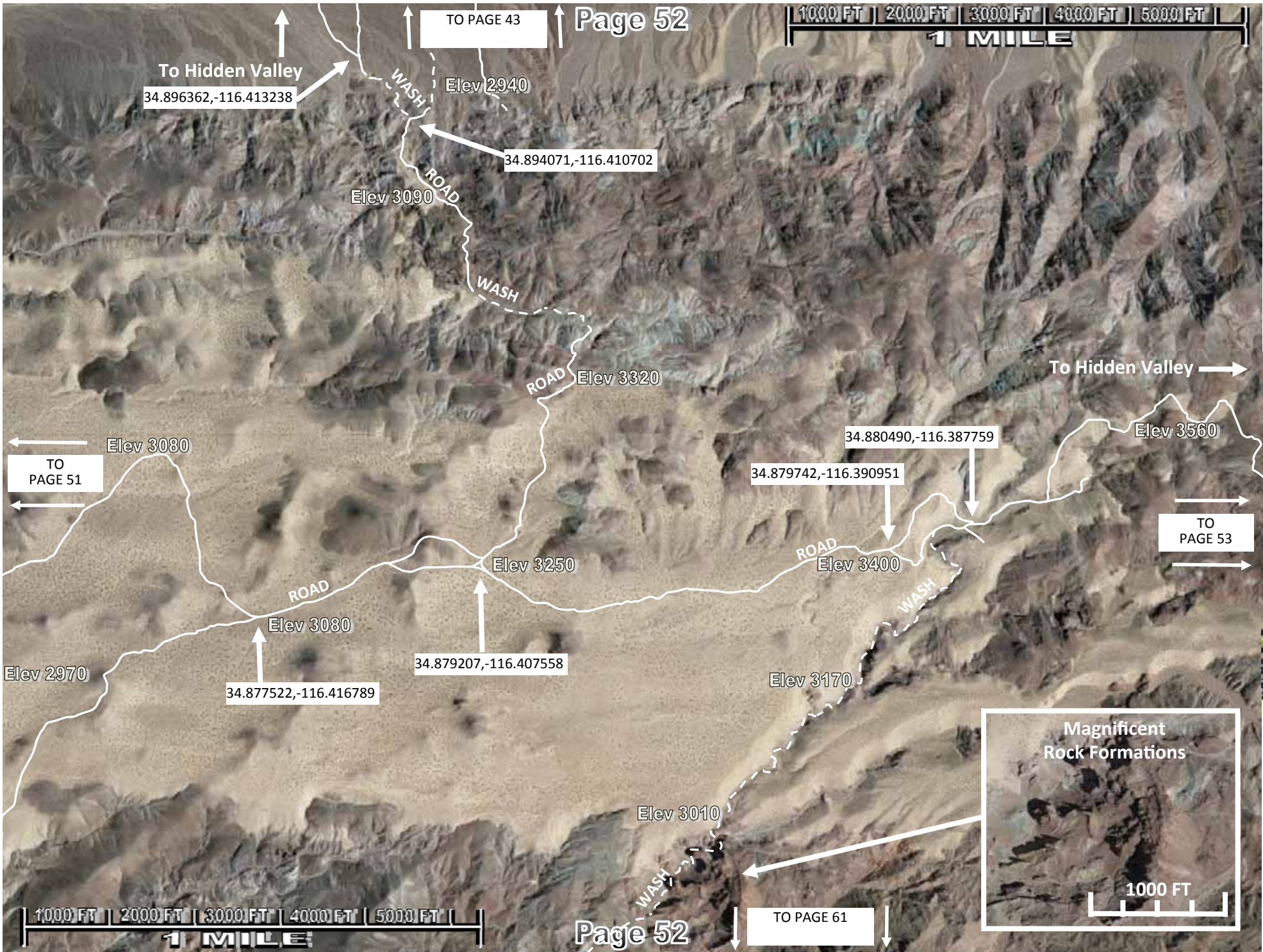
TO COUNTY ROAD 20795 AND I-40

Elev 2610



Page 51

↓ TO PAGE 60 ↓





↑ TO PAGE 45 ↑



Elev 3300

← TO PAGE 53

→ TO PAGE 55

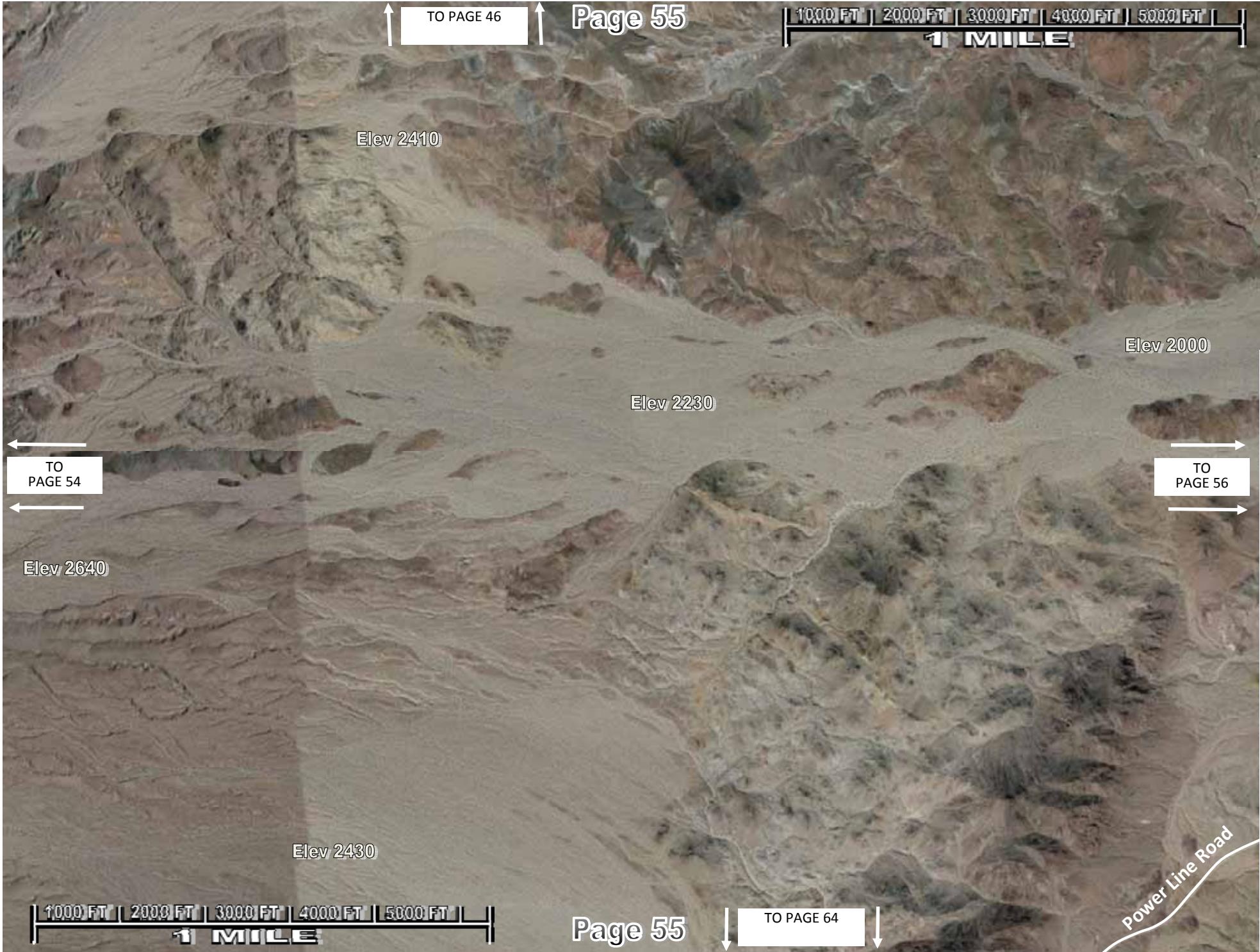
Elev 2970

CADY PEAK
Elev 4610

Elev 2970



↓ TO PAGE 63 ↓



↑ TO PAGE 46 ↑

1000 FT | 2000 FT | 3000 FT | 4000 FT | 5000 FT |
1 MILE

Elev 2410

Elev 2000

Elev 2230

← TO PAGE 54 ←

→ TO PAGE 56 →

Elev 2640

Elev 2430

1000 FT | 2000 FT | 3000 FT | 4000 FT | 5000 FT |
1 MILE

↓ TO PAGE 64 ↓

Power Line Road





↑ TO PAGE 48 ↑

Page 57

Power Line Road

Elev 1370

Crucero Road

old RR grade

Elev 1330

← TO PAGE 56

Elev 1300

Crucero Road

Dry Lake Bypass

34.872287,-116.193826 JUNCTION

Page 57

↓ TO PAGE 66 ↓

↑ TO PAGE 49 ↑



Elev 2050

Elev 2080

Elev 2000

TO PAGE 59

WASH

Elev 1965

Elev 2230

WASH

Elev 2070

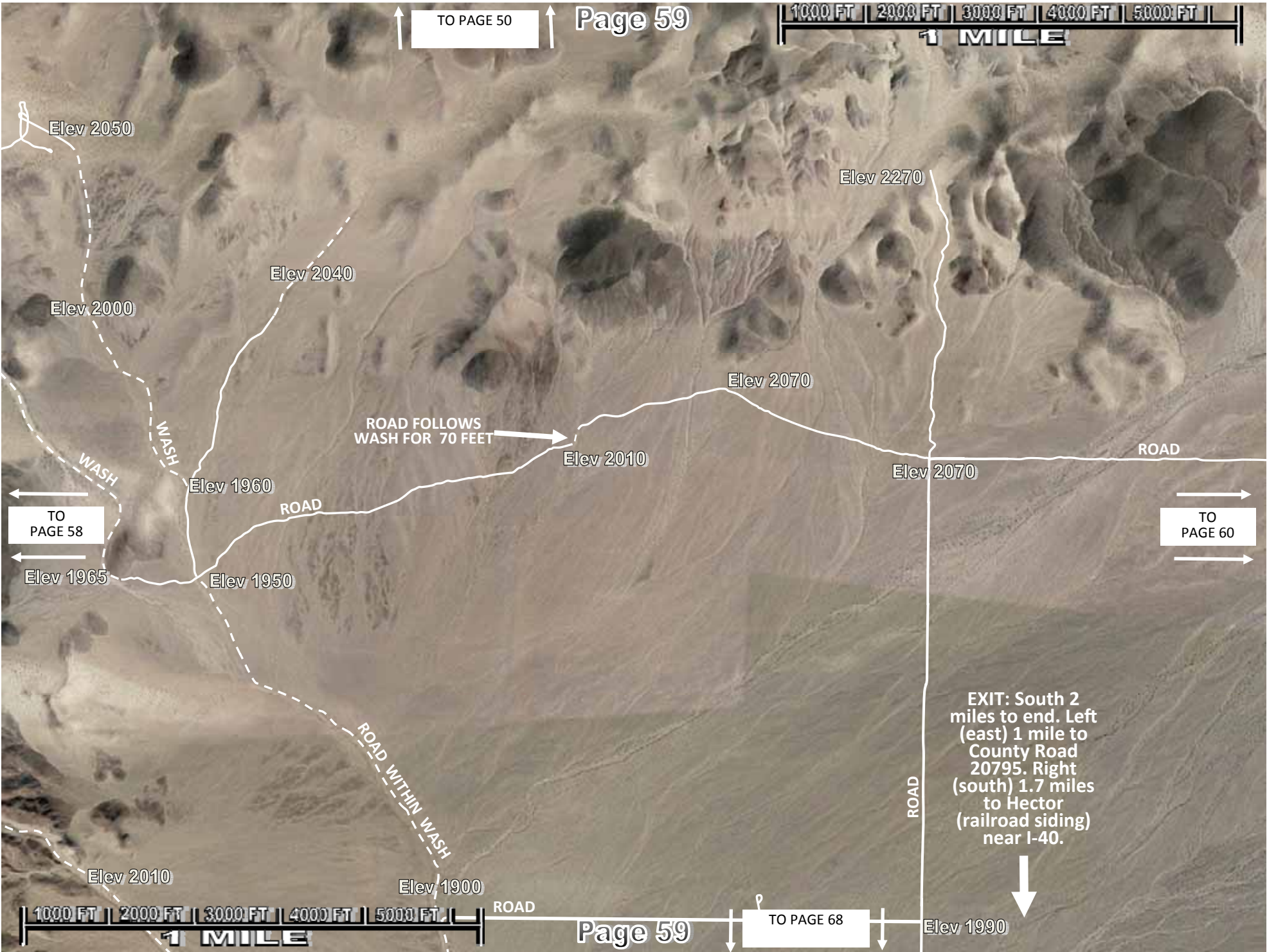
ROAD

WASH

Elev 2010



↓ TO PAGE 67 ↓



↑ TO PAGE 50 ↑

1000 FT | 2000 FT | 3000 FT | 4000 FT | 5000 FT |
1 MILE

Elev 2050

Elev 2270

Elev 2040

Elev 2000

Elev 2070

ROAD FOLLOWS WASH FOR 70 FEET

ROAD

Elev 2010

Elev 2070

→ TO PAGE 60 →

← TO PAGE 58 ←

ROAD

Elev 1960

Elev 1965

Elev 1950

EXIT: South 2 miles to end. Left (east) 1 mile to County Road 20795. Right (south) 1.7 miles to Hector (railroad siding) near I-40.

ROAD WITHIN WASH

ROAD

Elev 2010

Elev 1900

ROAD

↓ TO PAGE 68 ↓

Elev 1990

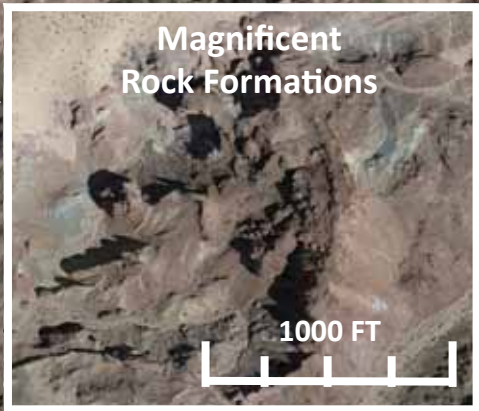
1000 FT | 2000 FT | 3000 FT | 4000 FT | 5000 FT |
1 MILE



↑ TO PAGE 52 ↑



34.866606, -116.402030



WASH

Elev 2700

Shown as "JEEP TRAIL" in 1955 USGS topo map

← TO PAGE 60 →

→ TO PAGE 62 ←

WASH

Elev 2510

Elev 2870

Elev 3200

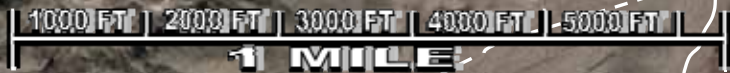
ROAD

ROAD

WASH

Elev 2640

WASH



↓ TO PAGE 70 ↓



↑ TO PAGE 53

Page 62

1000 FT | 2000 FT | 3000 FT | 4000 FT | 5000 FT |
1 MILE

Elev 3670

34.864472, -116.354296

WASH

Elev 3440

Elev 3620

Elev 3500

Elev 3470

ROAD

Elev 3200

Elev 3530

← TO PAGE 61

TO PAGE 63 →

Elev 3270

Shown as "JEOP TRAIL" in 1955 USGS topo map

EXIT: Follow trail/wash south 1 mile to Logan Mine on your right (west). Mine is at 34.832019, -116.365161. Follow road past mine to west side of the mine. Then follow road southwest 2 miles to Hector Road at 34.811340, -116.386606. Go left (southeast) 1.5 miles to powerline road. Right (southwest) 1 mile to railroad and nearby I-40.

Elev 2860

Elev 2960

1000 FT | 2000 FT | 3000 FT | 4000 FT | 5000 FT |
1 MILE

Page 62

↓ TO PAGE 71

↑ TO PAGE 54 ↑

Page 63



Elev. 4070

Elev. 4050

Elev. 3470

Elev. 3930

Elev. 2700

WASH

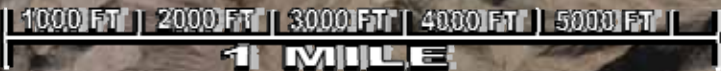
← TO PAGE 62 ←

→ TO PAGE 64 →

Elev. 3680

Elev. 3000

WASH



Page 63

↓ TO PAGE 72 ↓

↑ TO PAGE 55 ↑



Elev 2030

Elev 2700

Elev 2140

← TO PAGE 63 ←

→ TO PAGE 65 →

Power Line Road

Elev 2480

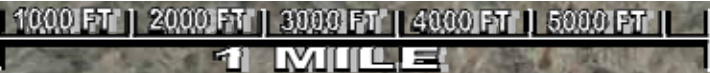
EXIT: Southwest 4.7 miles to Hector Road or 7 miles to I-40.



↓ TO PAGE 73 ↓

↑ TO PAGE 56 ↑

Page 65



Power Line Road

Elev 2030

← TO PAGE 64 ←

Elev 1730

→ TO PAGE 66 →

Elev 1490



Page 65

↓ TO PAGE 74 ↓

Preston Mine Road

Elev 1500

Old Dominion

▣ Mine
Elev 1640

← TO PAGE 65 ←

Elev 1300

Elev 1325

ROAD

ROAD

34.858716,-116.200891

34.854366,-116.200603

Elev 1300

Crucero Road

Old RR Grade

Broadwell
Dry Lake

Elev 1300

Dry Lake Bypass

34.845564,-116.197311

Preston Mine Road

Elev 1410

Preston Mine 6.7 miles southwest. Most of this road has been obliterated by washes, but it can be followed by GPS. Road continues on pages 73-74.

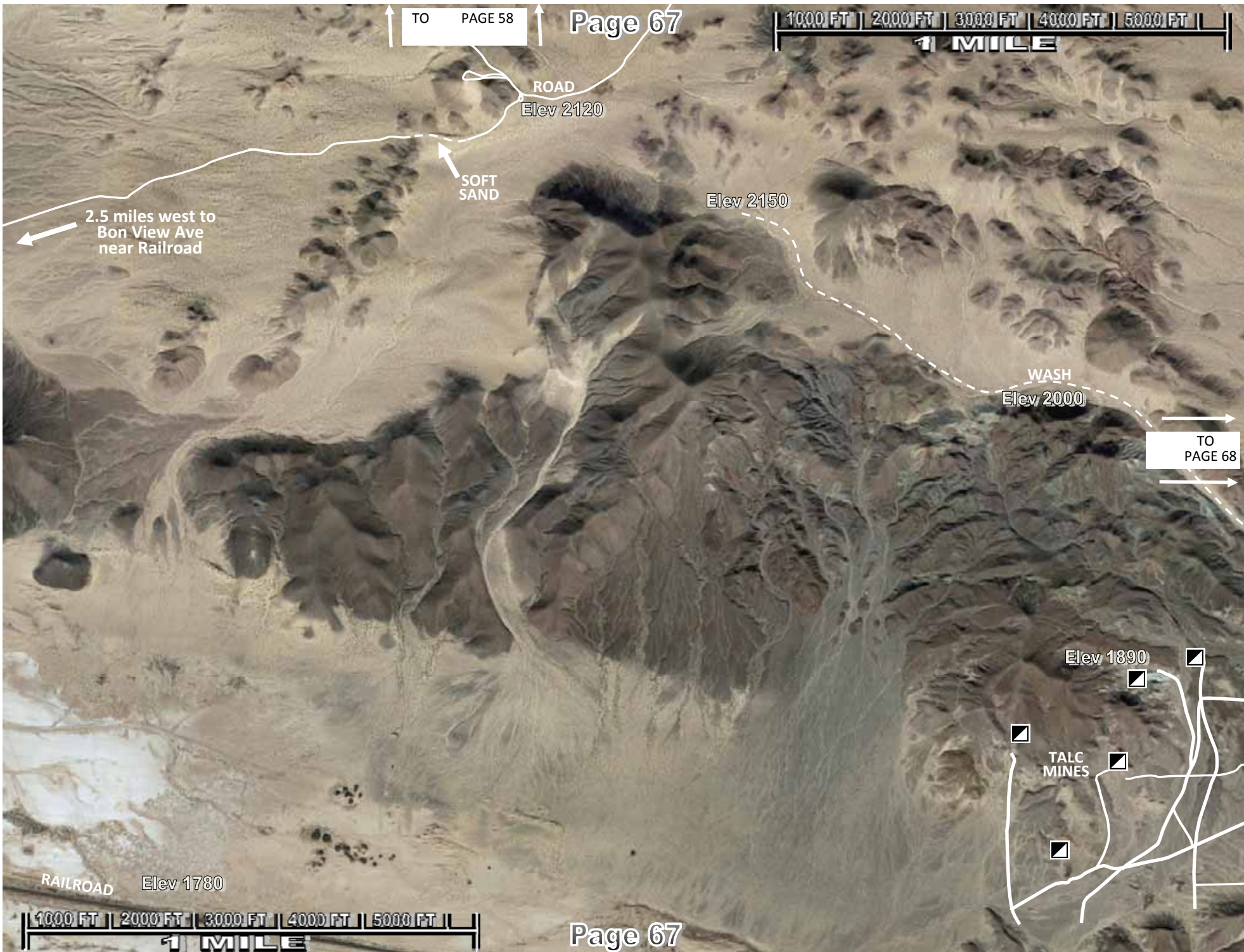
Elev 1420

34.841234,-116.217334

Elev 1300

EXIT: South 8 miles to Ludlow at I-40.

Elev 1300



↑ TO PAGE 58 ↑

Page 67

1000 FT | 2000 FT | 3000 FT | 4000 FT | 5000 FT |
1 MILE

ROAD
Elev 2120

SOFT SAND

Elev 2150

WASH
Elev 2000

TO PAGE 68

2.5 miles west to
Bon View Ave
near Railroad

Elev 1890

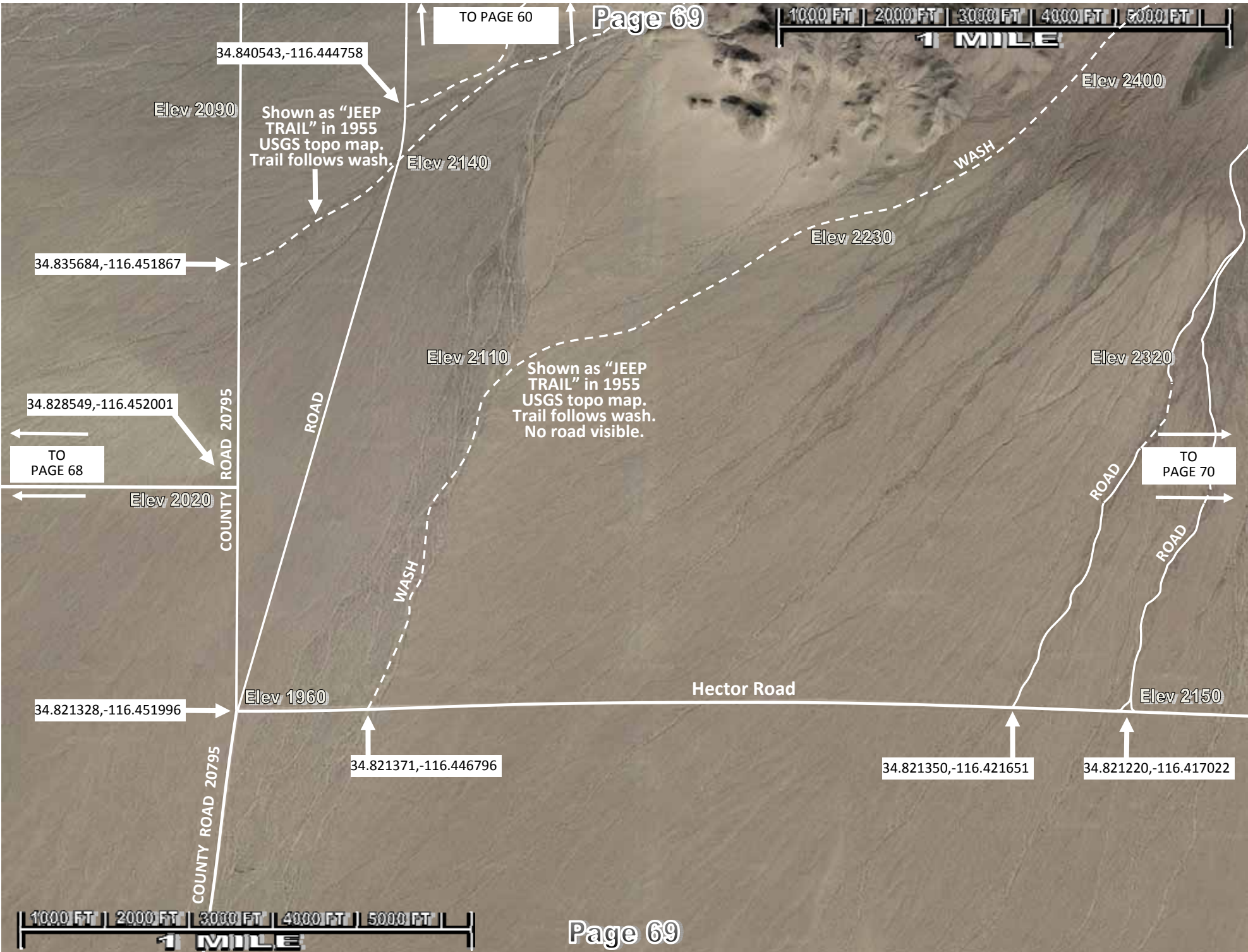
TALC
MINES

RAILROAD
Elev 1780

1000 FT | 2000 FT | 3000 FT | 4000 FT | 5000 FT |
1 MILE

Page 67





34.840543, -116.444758

Elev 2090

Shown as "JEEP TRAIL" in 1955 USGS topo map. Trail follows wash.

Elev 2140

Elev 2400

WASH

Elev 2230

34.835684, -116.451867

Elev 2110

Shown as "JEEP TRAIL" in 1955 USGS topo map. Trail follows wash. No road visible.

Elev 2320

34.828549, -116.452001

COUNTY ROAD 20795

ROAD

TO PAGE 68

Elev 2020

TO PAGE 70

ROAD

ROAD

Hector Road

34.821328, -116.451996

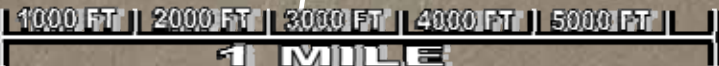
Elev 1960

Elev 2150

34.821371, -116.446796

34.821350, -116.421651

34.821220, -116.417022







↑ TO PAGE 63 ↑

Page 72



WASH
Power Line Road
Elev 2550

Elev 2650

← TO PAGE 71

TO PAGE 73 →

COMMUNICATION TOWERS

Elev 2660



Page 72

↑ TO PAGE 64 ↑



← TO PAGE 72 ←

TO PAGE 74 →

Most of this road has been obliterated by washes.
 Preston Mine Road
 WASH

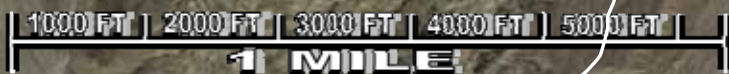
Elev 2030

34.825210,-116.270797

Preston Mine is located 2.3 miles south from this point at 34.797446, -116.287095.

ROAD

Elev 2290



↑ TO PAGE 65 ↑



Elev 1430

34.841234,-116.217334

WASH

Most of this road has been obliterated by washes, but it can be followed by GPS.

Elev 1580

34.833955,-116.237229

Preston Mine Road

WASH

Elev 1740



TO PAGE 73



TO PAGE 75

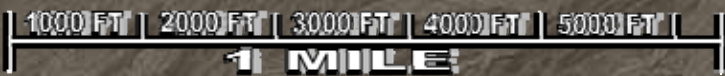


Elev 1410

Unnamed Mine Road

This road is shown in 1955 USGS topo map. Mostly obliterated by washes.

Elev 1650





TO PAGE 66

Elev 1300

Elev 1300

34.823549,-116.184816

Decent road with few washouts terminates at unnamed mine in 4.5 miles at 34.788736, -116.236759.

TO PAGE 74

Unnamed Mine Road

34.823549,-116.184816

Dry Lake Bypass

Crucero Road

old RR grade

This road is shown in 1955 USGS topo map. Now mostly obliterated by washes.

Elev 1300

Road is visible, but broken up by a number of washouts. It terminates at unnamed mine in 2.6 miles at 34.794986, -116.193151.

Elev 1300

