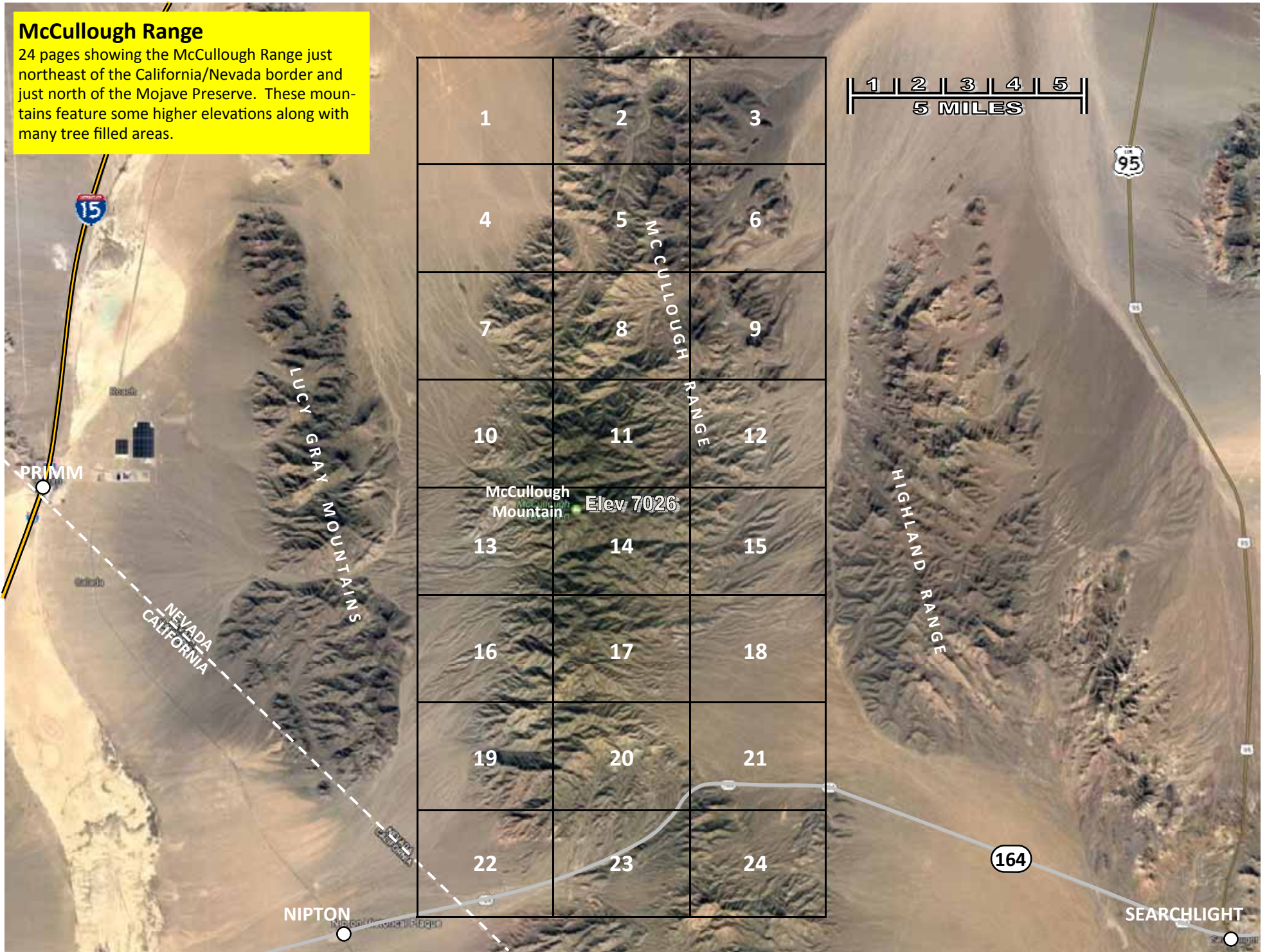


McCullough Range

24 pages showing the McCullough Range just northeast of the California/Nevada border and just north of the Mojave Preserve. These mountains feature some higher elevations along with many tree filled areas.





7 miles to I-15 and So. Las Vegas Blvd, 1 mile north of Jean, NV

35.742363, -115.235251

Airstrip

POWERLINE ROAD

POWERLINE ROAD

Elev 3025

Elev 3040

McClanahan Spring Road

Elev 3200

35.733534, -115.184175

TO PAGE 2

35.723559, -115.229847

POWERLINE ROAD

35.729103, -115.192672

POWERLINE ROAD (McCullough Pass Road)

To Beer Bottle Pass (5 miles) (Lucy Gray Mountains) . Road becomes McCullough Pass Road to I-15 near Primm, NV (6 more miles).

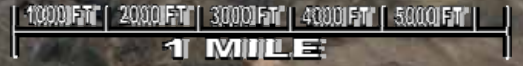
Elev 3365

35.720436, -115.209395

FAINT ROAD



TO PAGE 4



Elev 3200

Elev 3630

Elev 2820

McCullough Pass

WASH

WASH

MCCULLOUGH RANGE
WEST SIDE

TO PAGE 1

TO PAGE 3

TO PAGE 5





Elev 2400

12 miles to Hwy 95 near Nevada Solar One plant.

McCullough Pass Road (Rte 1)

Elev 2590

MCCULLOUGH RANGE
EAST SIDE

TO
PAGE 2



TO
PAGE 6



Page 4

1000 FT 2000 FT 3000 FT 4000 FT 5000 FT
1 MILE

↑ TO PAGE 1 ↑

35.704014, -115.235065

35.712134, -115.225157

Elev 3350

35.704711, -115.225157

35.699832, -115.221213

Elev 3535

35.698438, -115.191406

Elev 3800

→ TO PAGE 5 →

Elev 3600

McClanahan Spring

Elev 3840

MCCULLOUGH RANGE
WEST SIDE

1000 FT 2000 FT 3000 FT 4000 FT 5000 FT
1 MILE

Page 4

↓ TO PAGE 7 ↓

↑ TO PAGE 2 ↑

1000 FT | 2000 FT | 3000 FT | 4000 FT | 5000 FT |
1 MILE



↑ TO PAGE 3



MCCULLOUGH RANGE
EAST SIDE

↑ TO PAGE 5

8.7 miles to
Nevada Solar
One plant near
Hwy 95.

POWERLINE ROAD
Elev 3020

13.3 miles to
Hwy 164.



↓ TO PAGE 9



TO PAGE 4

35.677885, -115.237802

Elev 3800

35.671873, -115.227552

Elev 4145

Elev 4400

MCCULLOUGH RANGE
WEST SIDE

TO PAGE 8

35.663591, -115.220982

Elev 3980

Elev 4160

35.656930, -115.213788

Elev 4360

Elev 4550

JUNCTION
35.656028, -115.262111

SMALL TRAIL FOLLOWS WASH

35.649019, -115.208021

Elev 4550

Elev 4890

Elev 4360

Elev 4620

Elev 4930
CORRAL - SPRING

35.643206, -115.196310

Elev 4250

35.642267, -115.255185

35.646350, -115.201097

TO PAGE 10





↑ TO PAGE 5 ↑

MCCULLOUGH RANGE
WEST SIDE

Elev 4490

Elev 4530

Elev 3720

Elev 3880

Elev 4090

Elev 4840

Elev 4350

Elev 5090

Elev 4920

McCullough Spring
Elev 4110
CORRALS

CORRAL AND SPRING

Elev 4410



↓ TO PAGE 11 ↓



↑ TO PAGE 6 ↑



Elev 3720

Elev 3165

← TO PAGE 8 ←

MCCULLOUGH RANGE
EAST SIDE

POWERLINE ROAD

McCullough Spring
Elev 4110
CORRALS

ROAD WASH

Elev 3880
McCullough Spring Road

Elev 3575

35.642298, -115.079424
5.7 miles north of Wee Thump N Road.

Elev 4410



↓ TO PAGE 12 ↓

ROAD

↑ TO PAGE 7 ↑



Elev 4250

35.642267, -115.255185

ROAD

Elev 4360

Elev 4575

WASH

ROAD

35.622077, -115.227998

Elev 4750

WASH

35.616874, -115.222304

Elev 5020

WASH

SMALL TRAIL

Elev 4840

Elev 5100

SMALL TRAIL

SMALL TRAIL

Elev 4615

SMALL TRAIL

SMALL TRAIL

SMALL TRAIL

WASH

ROAD

Elev 4460

Elev 4460

35.621577, -115.249620

Elev 4350

Elev 5260

Railroad Spring

35.604323, -115.202381

Elev 5130

ROAD

MCCULLOUGH RANGE
WEST SIDE

↓ TO PAGE 11 ↓



↓ TO PAGE 13 ↓

1000 FT | 2000 FT | 3000 FT | 4000 FT | 5000 FT |
1 MILE

↑ TO
PAGE 8

MCCULLOUGH RANGE
EAST SIDE



← TO
PAGE 10

→ TO
PAGE 12

McCullough Mountain Elev 7026

↓ TO
PAGE 14

1000 FT | 2000 FT | 3000 FT | 4000 FT | 5000 FT |
1 MILE



↑ TO PAGE 9

Elev 3575

35.642298, -115.079424
5.7 miles north of Wee Thump N Road.

35.633924, -115.099629
Junction

Elev 4410

Elev 4620

Elev 4370

Elev 4130

Elev 3890

4390

35.632651, -115.127381
Junction

Elev 4500

35.631210, -115.091117
Wash Crossing

Elev 3850

35.625344, -115.083023
4.4 miles north of Wee Thump N Road.

Elev 4590

TO PAGE 11

35.621184, -115.083796
4.2 miles north of Wee Thump N Road.

ORA HANNA SPRING

Elev 3910

MCCULLOUGH RANGE
EAST SIDE

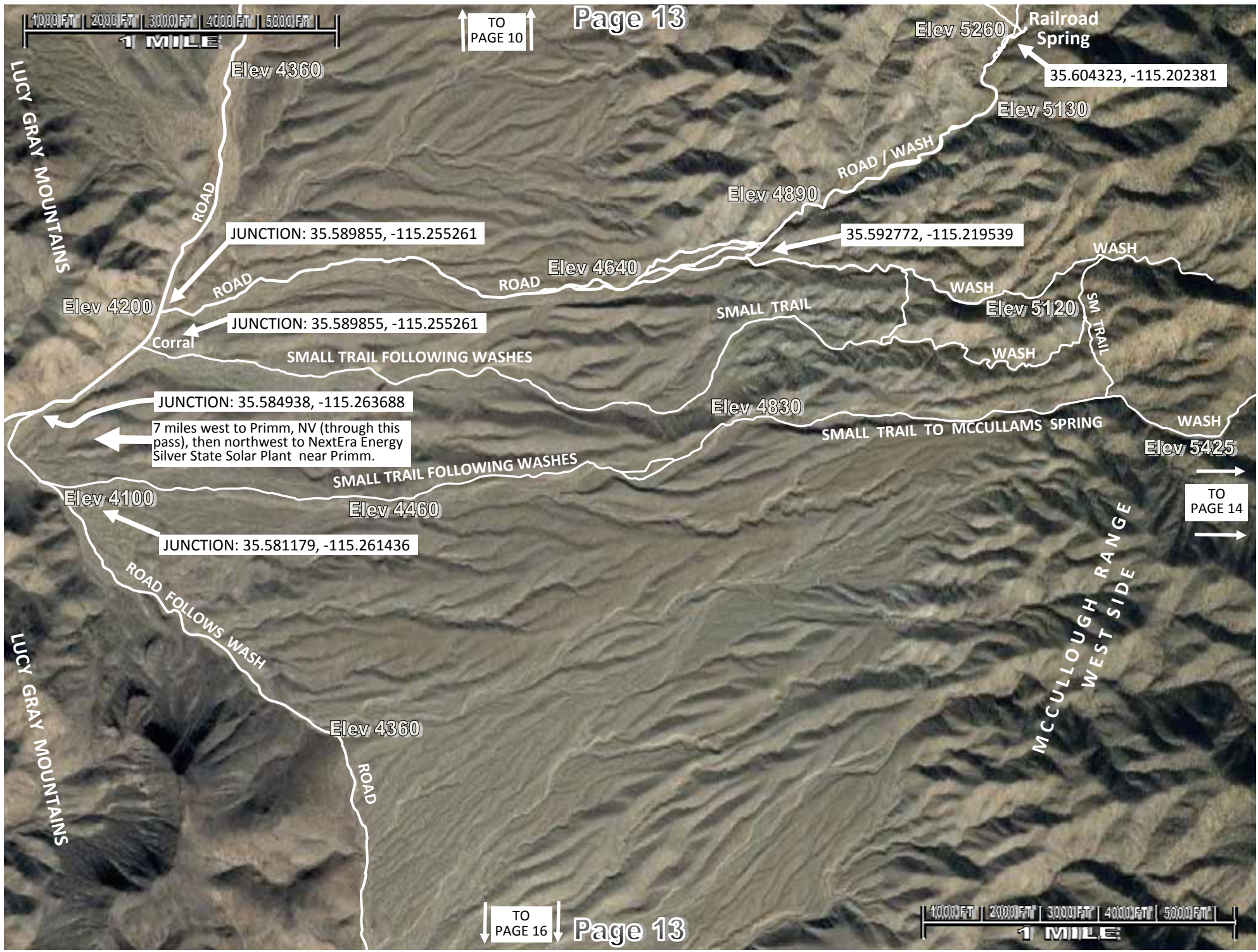
Elev 4050

TO PAGE 15





↑ TO PAGE 10



Elev 5260
Railroad Spring
35.604323, -115.202381
Elev 5130

Elev 4360

JUNCTION: 35.589855, -115.255261

35.592772, -115.219539

JUNCTION: 35.589855, -115.255261

JUNCTION: 35.584938, -115.263688

7 miles west to Primm, NV (through this pass), then northwest to NextEra Energy Silver State Solar Plant near Primm.

JUNCTION: 35.581179, -115.261436

TO PAGE 14

↓ TO PAGE 16



LUCY GRAY MOUNTAINS

LUCY GRAY MOUNTAINS

MCCULLOUGH RANGE
WEST SIDE

ROAD

ROAD

ROAD

SMALL TRAIL

WASH

WASH

Elev 5120

SM TRAIL

WASH

Elev 4830

SMALL TRAIL TO MCCULLAMS SPRING

WASH

Elev 5425

SMALL TRAIL FOLLOWING WASHES

SMALL TRAIL FOLLOWING WASHES

ROAD FOLLOWS WASH

Elev 4360

ROAD

Elev 4200

Corral

Elev 4640

Elev 4890

Elev 4100

Elev 4460

↑ TO PAGE 11 ↓

1000 FT | 2000 FT | 3000 FT | 4000 FT | 5000 FT |
1 MILE

McCullough Mountain Elev 7026

MCCULLOUGH RANGE
EAST SIDE

Elev 5840

WASH

Elev 5585

McCullams Spring

35.588261, -115.185900

WASH

← TO PAGE 14

TO PAGE 15 →

Elev 4970

35.573478, -115.155312

Corral

PINE SPRING

Elev 5400

PINE

SPRING

ROAD

1000 FT | 2000 FT | 3000 FT | 4000 FT | 5000 FT |
1 MILE

↓ TO PAGE 17 ↓

↑ TO PAGE 12 ↑



MCCULLOUGH RANGE
EAST SIDE

← TO PAGE 14 ←



↓ TO PAGE 18 ↓

↑ TO PAGE 13



LUCY GRAY MOUNTAINS

ROAD FOLLOWS WASH

Elev 4360

ROAD

ROAD FOLLOWS WASH

Elev 4070

ROAD FOLLOWS WASH

Elev 3820

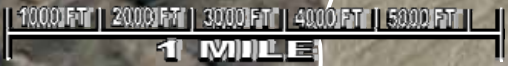
Elev 4080

Elev 4530

Elev 4360

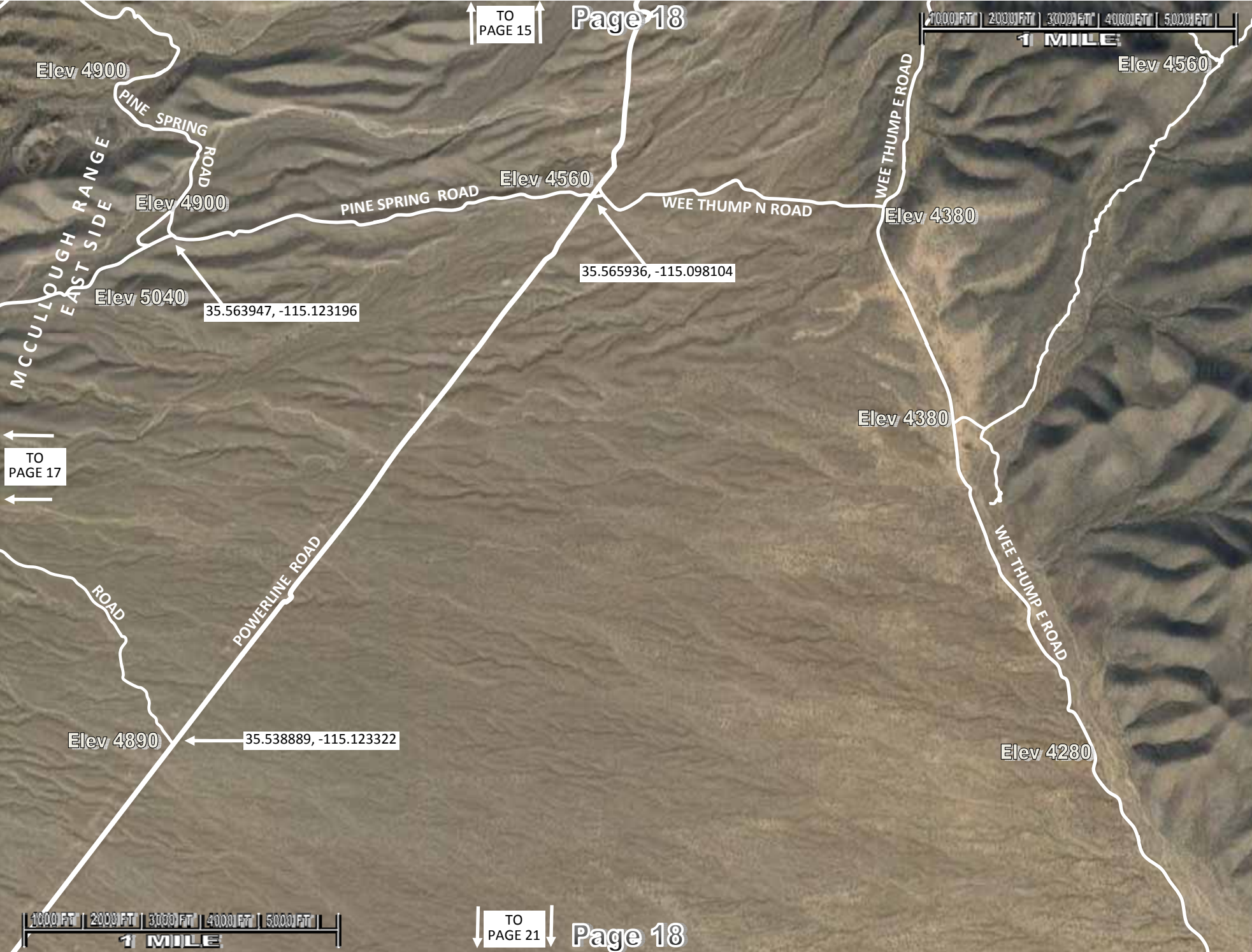
MCCULLOUGH RANGE
WEST SIDE

→ TO PAGE 17



↓ TO PAGE 19

↑ TO PAGE 15 ↑



← TO PAGE 17 ←

↓ TO PAGE 21 ↓





↑ TO PAGE 16

LUCY GRAY MOUNTAINS

ROAD FOLLOWS WASH

Elev 4080

Elev 3820

ROAD

Elev 4360

35.527093, -115.213000

WASH

WASH

ROAD

ROAD / WASH

MCCULLOUGH RANGE
WEST SIDE

Elev 5350

Elev 3720

ROAD

Elev 5170

→ TO PAGE 20

Elev 3960

35.513888, -115.223554

SHAFTS

Elev 4860

35.506835, -115.259636

Elev 3410

FADED ROAD

FADED ROAD

Elev 4270

Elev 4050

35.506359, -115.213687

NARROW ROAD WITH FREQUENT WASHOUTS

2.6 miles to Nipton, CA near Hwy 164.

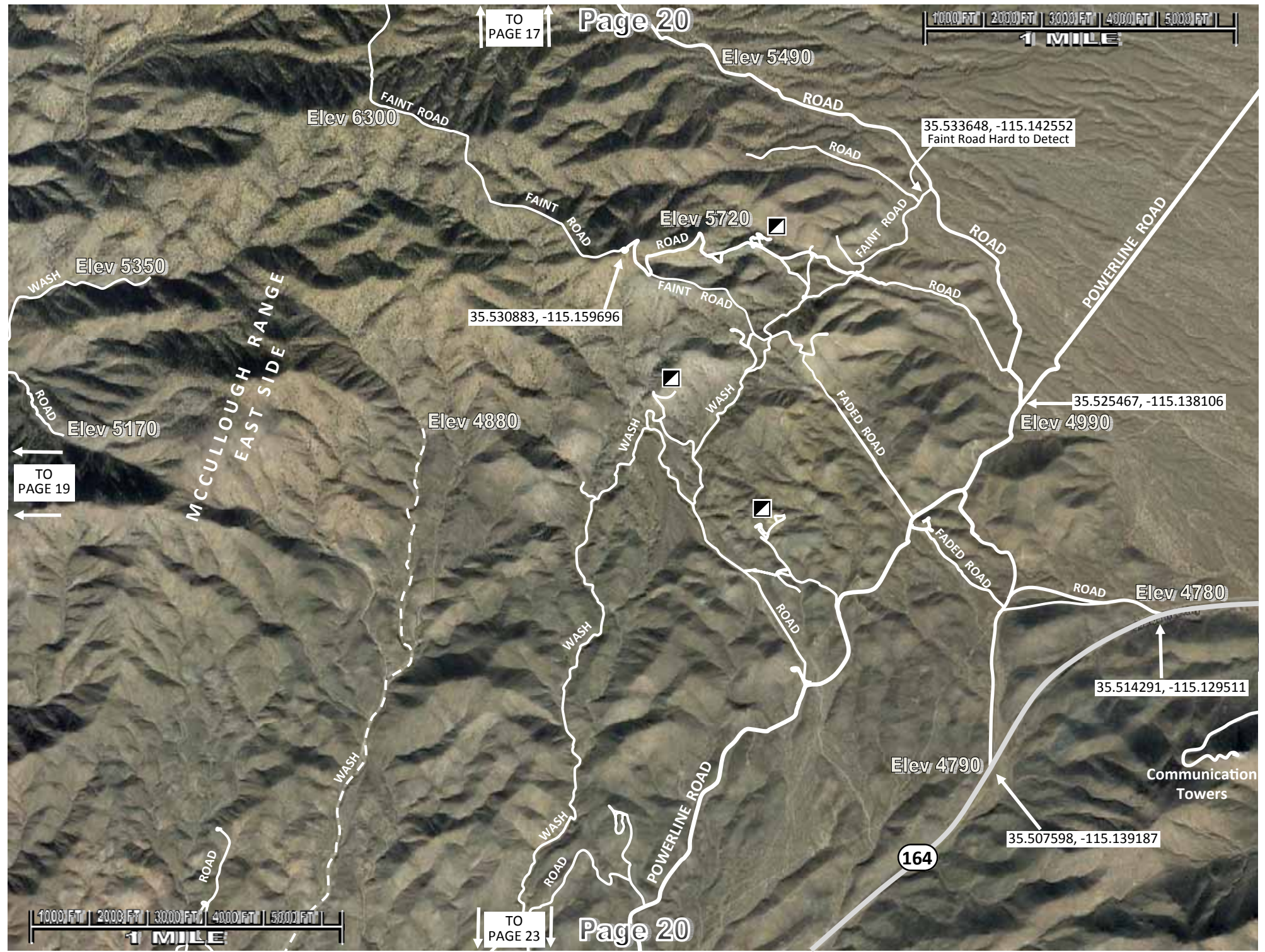
Elev 3490

Elev 3880

↓ TO PAGE 22



↑ TO PAGE 17



← TO PAGE 19

↓ TO PAGE 23



↑ TO PAGE 18 ↑

1000 FT | 2000 FT | 3000 FT | 4000 FT | 5000 FT |
1 MILE

POWERLINE ROAD

WEE THUMP ROAD

PIUTE VALLEY ROAD
(S/E to Hwy 164)

Elev 4220

← TO PAGE 20

35.514571, -115.116668

Elev 4670

164

JOSHUA TREE HIGHWAY

8.7 miles to Searchlight, NV

7 MILE ROAD

Communication Towers

35.505580, -115.083575

35.508961, -115.066305

164

Elev 4130

35.501188, -115.069044

ROAD

WASH

ROAD

ROAD / WASH

Elev 4515

Elev 4230

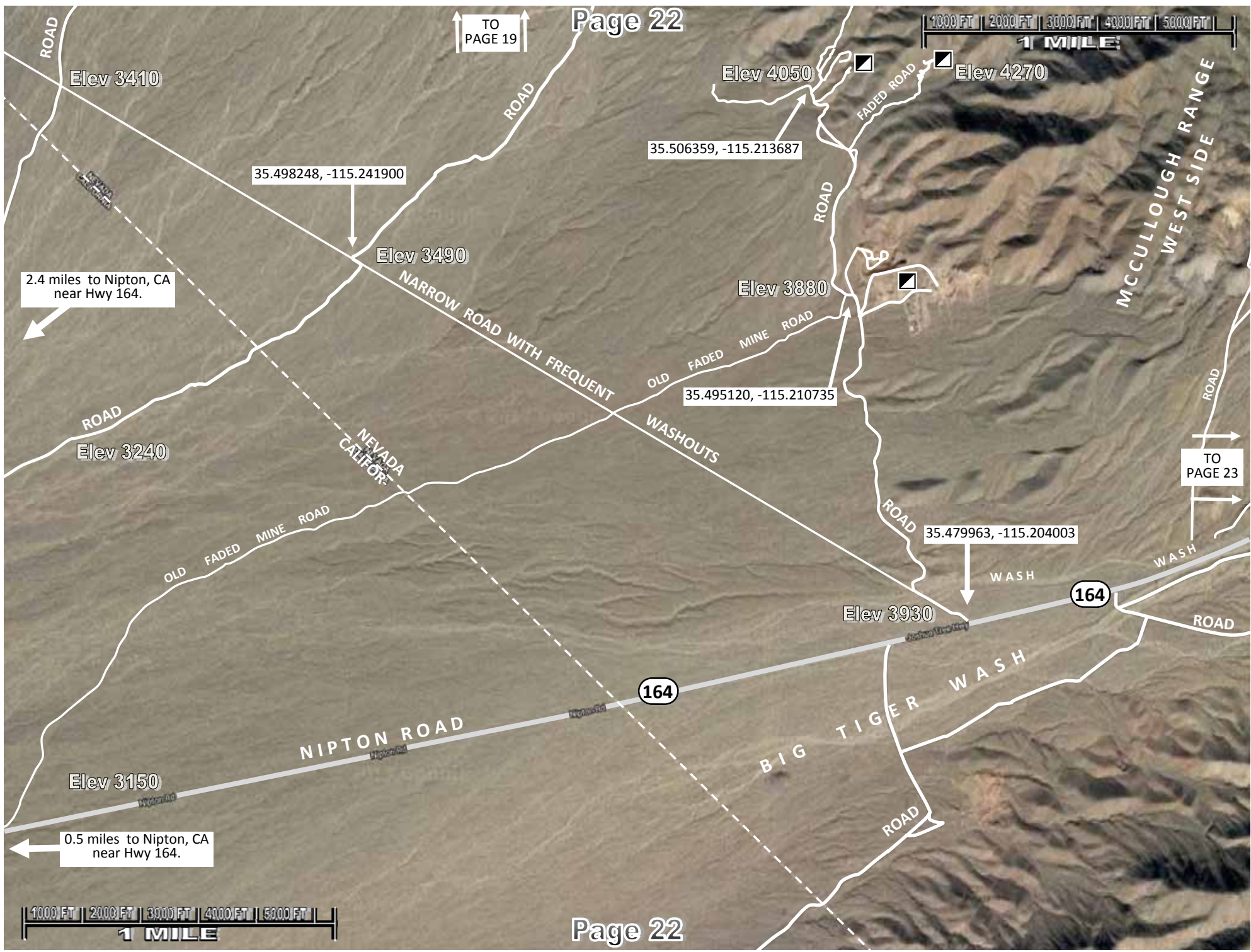
1000 FT | 2000 FT | 3000 FT | 4000 FT | 5000 FT |
1 MILE

↓ TO PAGE 24 ↓

↑ TO PAGE 19



MCCULLOUGH RANGE
WEST SIDE



Elev 3410

Elev 4050

Elev 4270

35.498248, -115.241900

35.506359, -115.213687

Elev 3490

Elev 3880

2.4 miles to Nipton, CA
near Hwy 164.

35.495120, -115.210735

Elev 3240

35.479963, -115.204003

TO PAGE 23

Elev 3930

164

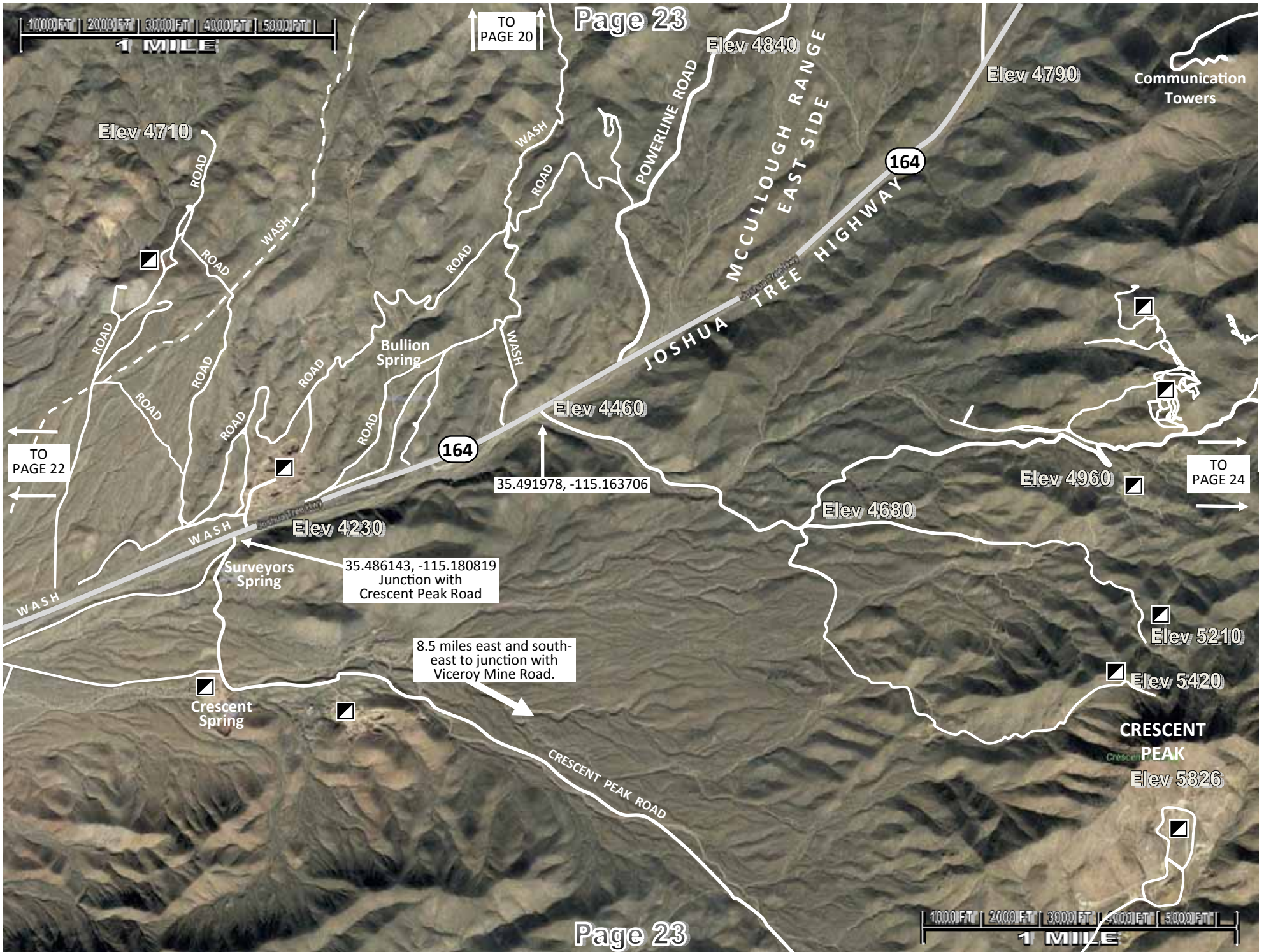
NIPTON ROAD

164

Elev 3150

0.5 miles to Nipton, CA
near Hwy 164.





1000 FT | 2000 FT | 3000 FT | 4000 FT | 5000 FT
1 MILE

Page 23

TO PAGE 20

Elev 4790

Communication Towers

Elev 4710

Elev 4840

164

164

Elev 4460

35.491978, -115.163706

TO PAGE 24

Elev 4960

TO PAGE 22

Elev 4680

Elev 4230

35.486143, -115.180819
Junction with
Crescent Peak Road

Elev 5210

8.5 miles east and southeast to junction with Viceroy Mine Road.

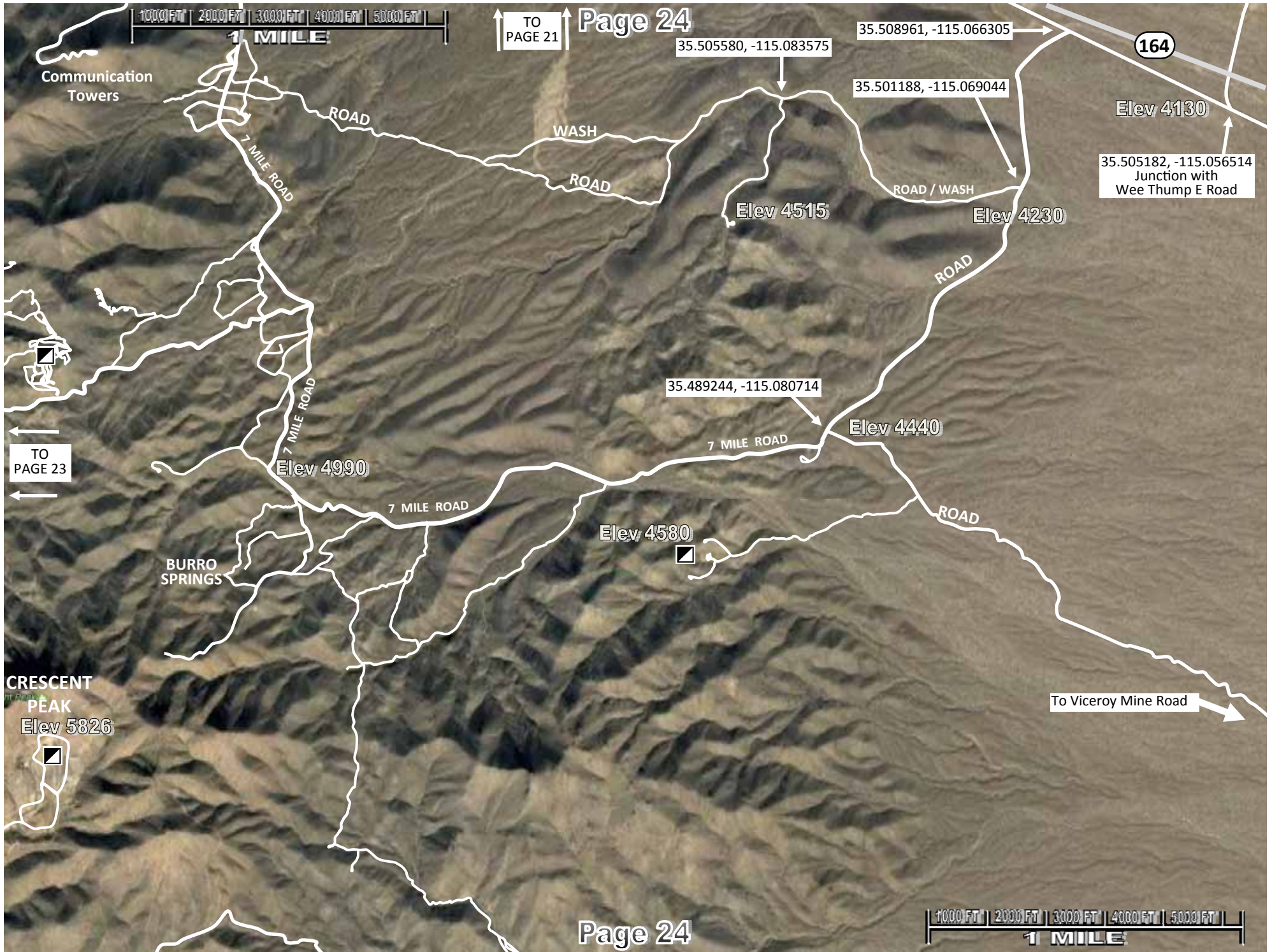
Elev 5420

Crescent Spring

CRESCENT PEAK
Elev 5826

Page 23

1000 FT | 2000 FT | 3000 FT | 4000 FT | 5000 FT
1 MILE



1000 FT | 2000 FT | 3000 FT | 4000 FT | 5000 FT
1 MILE

↑ TO PAGE 21 ↑ Page 24

35.508961, -115.066305

35.505580, -115.083575

35.501188, -115.069044

35.505182, -115.056514
Junction with Wee Thump E Road

35.489244, -115.080714

← TO PAGE 23

To Viceroy Mine Road →

1000 FT | 2000 FT | 3000 FT | 4000 FT | 5000 FT
1 MILE

Page 24