



KELSO CIMA ROAD

Hole-in-the-Wall Information Center

1

2

3

4

5

6

Edgar Peak

PROVIDENCE MOUNTAINS

Providence Mountains State Recreation...

7

RANCH ROAD

8

BLACK CANYON ROAD

FOSHAY PASS

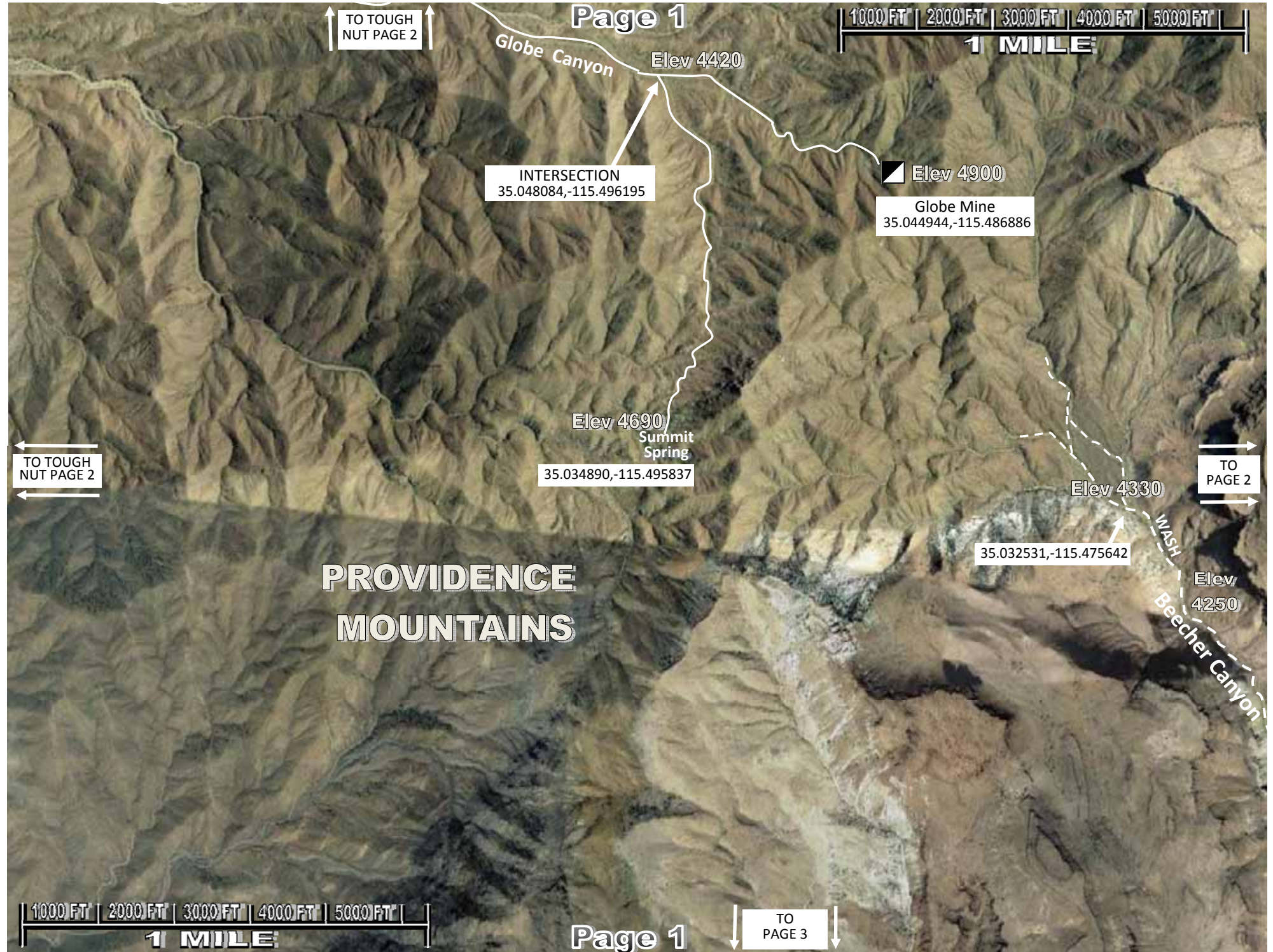
9

10

POWERLINE ROAD

PIPELINE ROAD

ESSEX ROAD



1000 FT | 2000 FT | 3000 FT | 4000 FT | 5000 FT |  
**1 MILE**

↑ TO BLACK CANYON ROAD PAGE 4 ↑

Wild Horse Canyon Road

FLAT TOP

TO BLACK CANYON ROAD PAGE 4

FLAT TOP  
Elev 5100

TO PAGE 1

Elev 4330

35.032531, -115.475642

Elev 4250

Beecher Canyon

Elev 4050

FLAT TOP

TO PAGE 4

1000 FT | 2000 FT | 3000 FT | 4000 FT | 5000 FT |  
**1 MILE**

↑ TO PAGE 1 ↑



FLAT TOP  
Elev 4860

Elev 4360

35.005590,-115.498640

# PROVIDENCE MOUNTAINS

Elev 3860

TO PAGE 4

FLAT TOP  
Elev 4500

Elev 4000

34.994316,-115.499124

Barberr Canyon

Elev 3720

FADED ROAD

34.987175,-115.477015

Elev 4050



Elev 3830

34.985830,-115.494231

TO PAGE 5

Elev 3660

RANCH

↑ TO PAGE 2 ↑



FLAT TOP  
Elev 5050

WASH  
Elev 3950

Structure  
Ruins

35.009407,-115.466598

FLAT TOP  
Elev 4860

Elev 3860

TO PAGE 3

Barberr Canyon

Beecher Canyon

Elev 3730

Whiskey  
Spring  
Elev 3990

FLAT TOP  
Elev 4950

Domingo  
Spring

Elev 3850

Elev 3720

WASH Road

34.986818,-115.463106

Elev 3660

RANCH

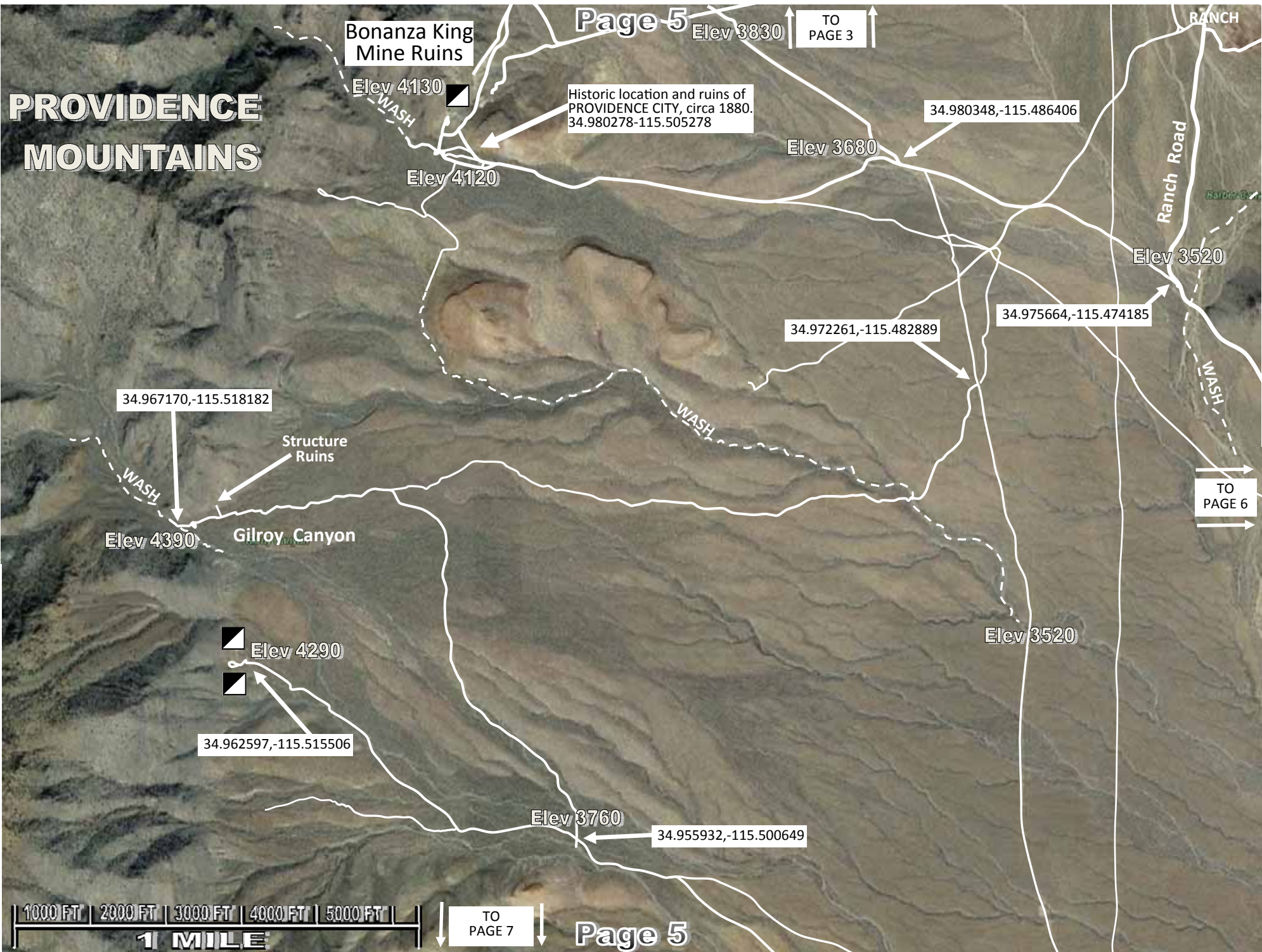
Elev 3610

Elev 3740

TO PAGE 6



# PROVIDENCE MOUNTAINS



Bonanza King Mine Ruins

Page 5

Elev 3830

TO PAGE 3

Historic location and ruins of PROVIDENCE CITY, circa 1880. 34.980278,-115.505278

34.980348,-115.486406

Elev 3680

Ranch Road

RANCH

Elev 3520

34.972261,-115.482889

34.975664,-115.474185

34.967170,-115.518182

Structure Ruins

Elev 4390

Gilroy Canyon

TO PAGE 6

Elev 4290

34.962597,-115.515506

Elev 3520

Elev 3760

34.955932,-115.500649



TO PAGE 7

Page 5



TO PAGE 4



34.986818,-115.463106

34.975664,-115.474185

34.956485,-115.453386

TO BLACK CANYON ROAD PAGE 6

TO PAGE 5



TO PAGE 8

1000 FT | 2000 FT | 3000 FT | 4000 FT | 5000 FT |  
1 MILE

↑ TO PAGE 5 ↑

Elev 4280  
MITCHELL  
CAVERNS  
Providence Mountains  
State Recreation Area



Essex Road (paved)

Elev 3560

34.943090,-115.487170

# PROVIDENCE MOUNTAINS

→ TO PAGE 8 →

↓ TO PAGE 9 ↓

1000 FT | 2000 FT | 3000 FT | 4000 FT | 5000 FT |  
1 MILE



↑ TO PAGE 6 ↑

Page 8



Elev 3240

Elev 3310

34.939929,-115.472471

← TO PAGE 7 ←

TO BLACK CANYON ROAD PAGE 7

Ranch Road

Colton Well

Elev 3190

Essex Road (paved)  
Elev 3200



↓ TO PAGE 10 ↓

Page 8

34.917276,-115.434418

Elev 3010

# PROVIDENCE MOUNTAINS

↑ TO PAGE 7 ↑

Page 9



← FOSHAY PASS

9 miles west to Kelbaker Road near Kelso Dunes

34.911817,-115.508047

34.911121,-115.489807

TO PAGE 10

Elev 3680

Pipe Line Road

Elev 3170

High Tower Power Line Road

Faded Road

Faded Road

Elev 3100



Page 9



↑ TO PAGE 8 ↑

Ranch Road

Essex Road (paved)

34.917276,-115.434418

Elev 3010

19.7 miles to Mojave Road

Black Canyon Road (paved)

TO BLACK CANYON ROAD PAGE 7

High Tower Power Line Road

Elev 3160

Pipe Line Road

9.7 miles to I-40.

Elev 2930

Essex Road (paved)

← TO PAGE 9

