



To East Lanfair Valley Trail NORTH

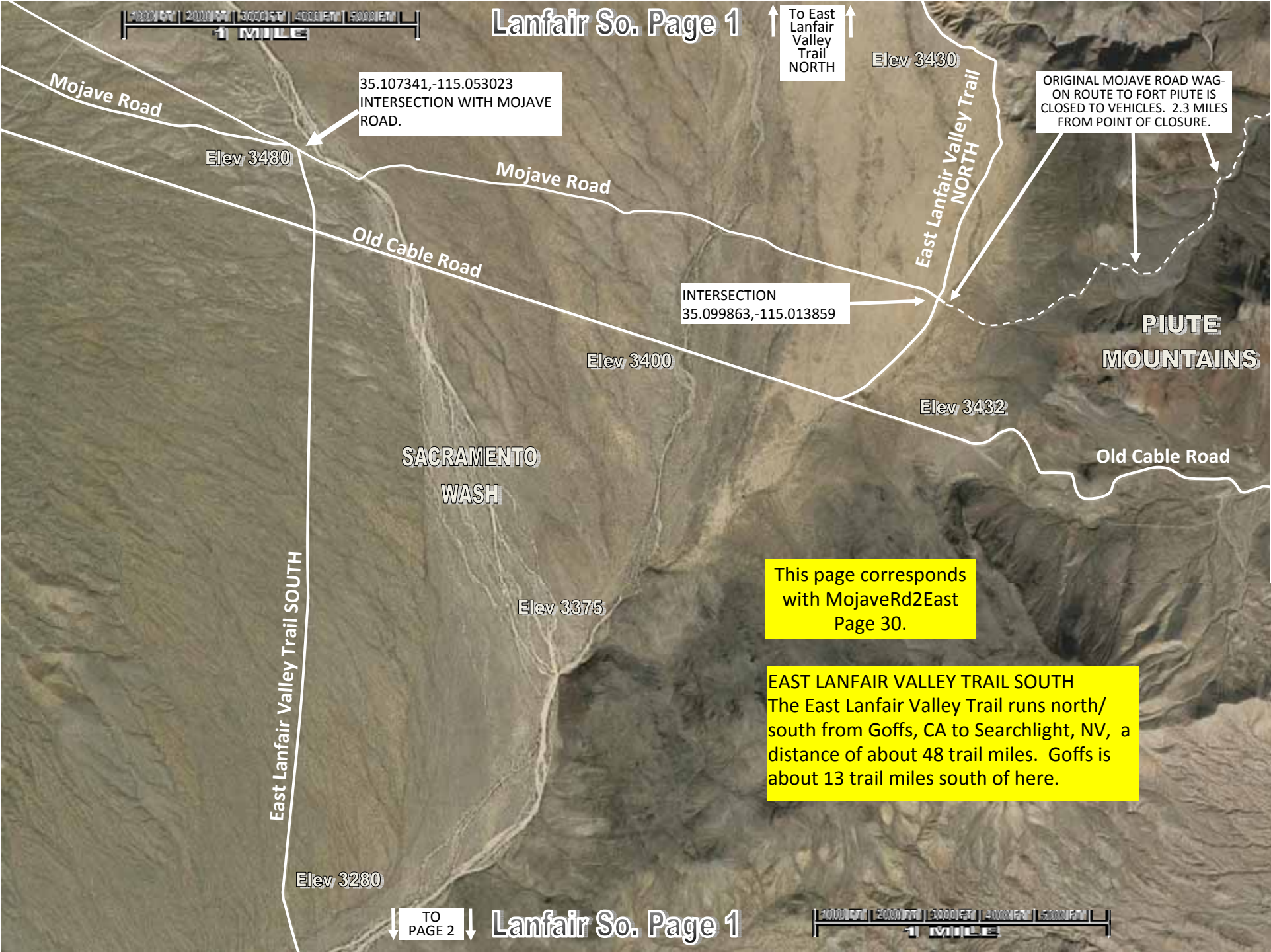
ORIGINAL MOJAVE ROAD WAGON ROUTE TO FORT PIUTE IS CLOSED TO VEHICLES. 2.3 MILES FROM POINT OF CLOSURE.

35.107341,-115.053023 INTERSECTION WITH MOJAVE ROAD.

INTERSECTION 35.099863,-115.013859

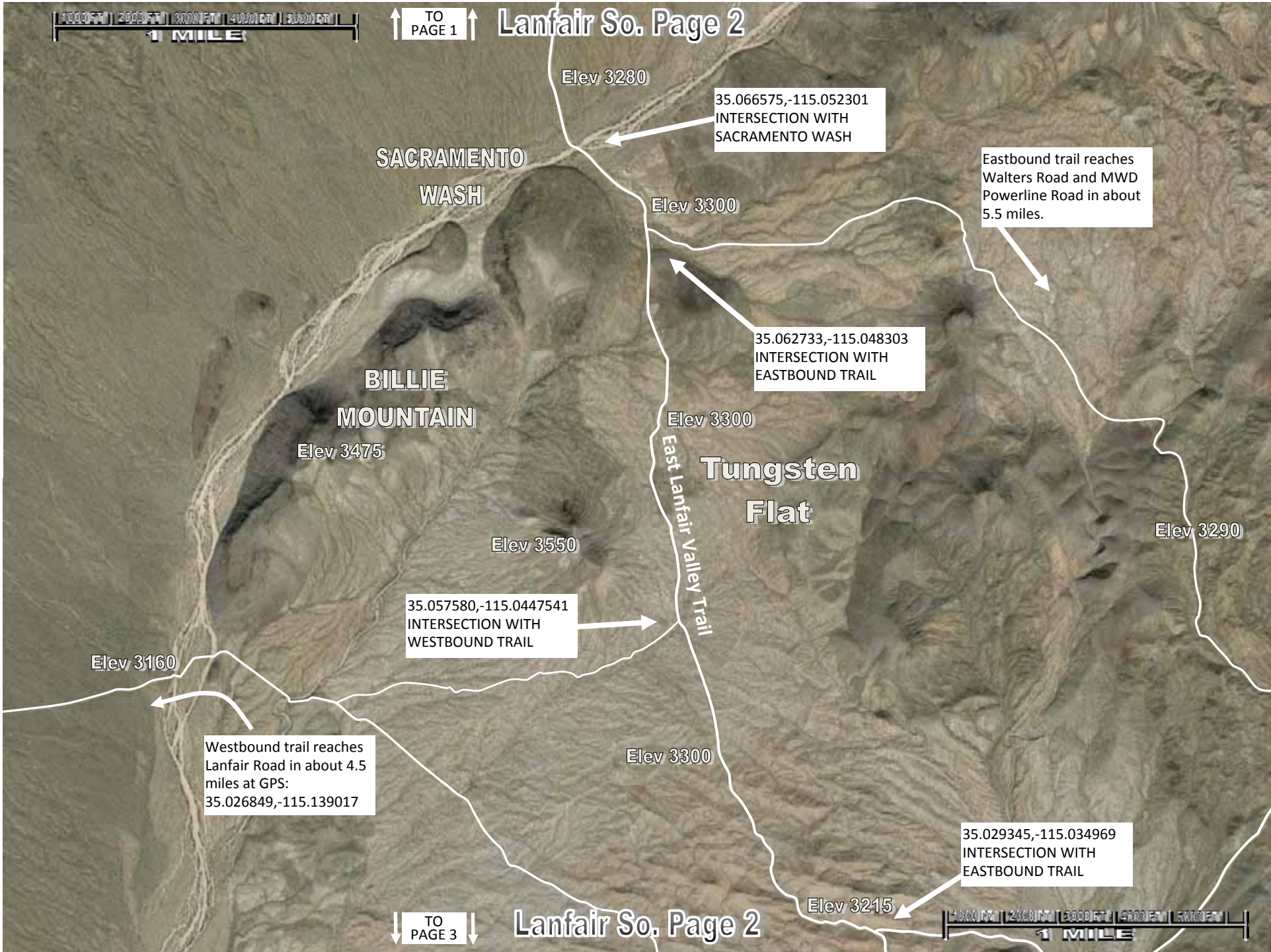
This page corresponds with MojaveRd2East Page 30.

EAST LANFAIR VALLEY TRAIL SOUTH The East Lanfair Valley Trail runs north/south from Goffs, CA to Searchlight, NV, a distance of about 48 trail miles. Goffs is about 13 trail miles south of here.



TO PAGE 2





1000 FT | 2000 FT | 3000 FT | 4000 FT | 5000 FT
1 MILE

↑ TO PAGE 1

Lanfair So. Page 2

Elev 3280

35.066575,-115.052301
INTERSECTION WITH
SACRAMENTO WASH

SACRAMENTO
WASH

Eastbound trail reaches
Walters Road and MWD
Powerline Road in about
5.5 miles.

Elev 3300

35.062733,-115.048303
INTERSECTION WITH
EASTBOUND TRAIL

BILLIE
MOUNTAIN

Elev 3300

Tungsten
Flat

Elev 3475

Elev 3290

Elev 3550

East Lanfair Valley Trail

35.057580,-115.0447541
INTERSECTION WITH
WESTBOUND TRAIL

Elev 3160

Westbound trail reaches
Lanfair Road in about 4.5
miles at GPS:
35.026849,-115.139017

Elev 3300

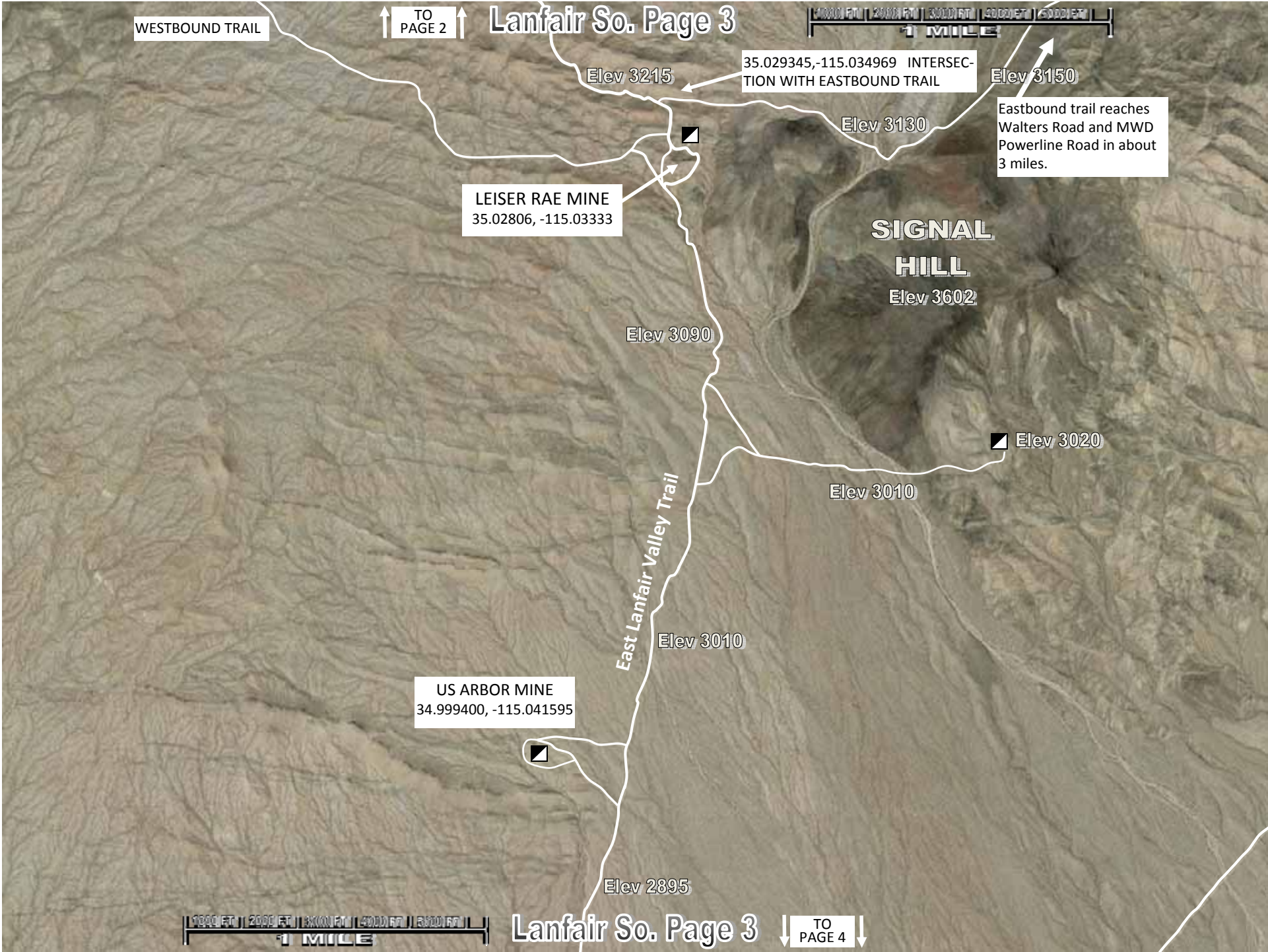
35.029345,-115.034969
INTERSECTION WITH
EASTBOUND TRAIL

Elev 3215

↓ TO PAGE 3

Lanfair So. Page 2

1000 FT | 2000 FT | 3000 FT | 4000 FT | 5000 FT
1 MILE



WESTBOUND TRAIL

↑ TO PAGE 2 ↑

Lanfair So. Page 3

1000 FT | 2000 FT | 3000 FT | 4000 FT | 5000 FT
1 MILE

Elev 3215

35.029345, -115.034969 INTERSECTION WITH EASTBOUND TRAIL

Elev 3150

Eastbound trail reaches Walters Road and MWD Powerline Road in about 3 miles.

Elev 3130

LEISER RAE MINE
35.02806, -115.03333

SIGNAL HILL
Elev 3602

Elev 3090

Elev 3020

East Lanfair Valley Trail

Elev 3010

US ARBOR MINE
34.999400, -115.041595

Elev 3010

Elev 2895

1000 FT | 2000 FT | 3000 FT | 4000 FT | 5000 FT
1 MILE

Lanfair So. Page 3

↓ TO PAGE 4 ↓



Elev 2895

Elev 2870

Elev 2860

SACRAMENTO
WASH

East Lanfair Valley Trail

Elev 2780

MWD Powerline Road

34.968687,-115.049866
INTERSECTION WITH WIDE
SECTION OF SACRAMENTO
WASH

Elev 2765

Powerline Road

Elev 2695





34.968687,-115.049866
INTERSECTION WITH WIDE
SECTION OF SACRAMENTO
WASH

Elev 2765

34.961941,-115.054402
INTERSECTION WITH
POWERLINE ROAD

Powerline Road

Elev 2750

SACRAMENTO

Elev 2695

WASH

Elev 2690

Elev 2760

East Lanfair Valley Trail

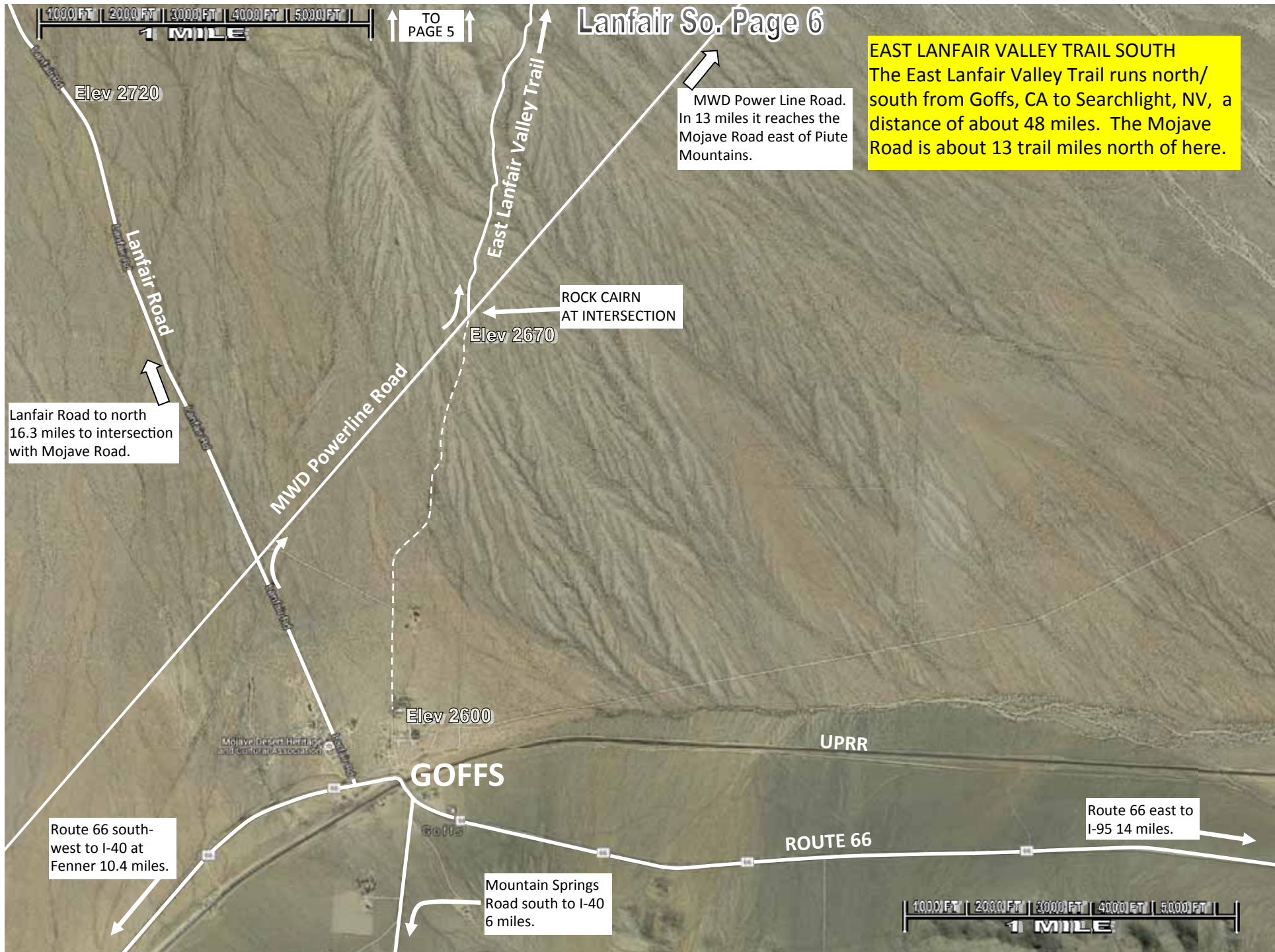
MWD Powerline Road

Lanfair Road

34.940141,-115.059813
INTERSECTION WITH MWD
POWERLINE ROAD

Elev 2670





EAST LANFAIR VALLEY TRAIL SOUTH
The East Lanfair Valley Trail runs north/south from Goffs, CA to Searchlight, NV, a distance of about 48 miles. The Mojave Road is about 13 trail miles north of here.

↑ TO PAGE 5 ↑

1000 FT | 2000 FT | 3000 FT | 4000 FT | 5000 FT |
1 MILE

MWD Power Line Road.
In 13 miles it reaches the Mojave Road east of Piute Mountains.

ROCK CAIRN
AT INTERSECTION

Elev 2670

Elev 2720

Lanfair Road

East Lanfair Valley Trail

MWD Powerline Road

Lanfair Road to north
16.3 miles to intersection
with Mojave Road.

Elev 2600

GOFFS

UPRR

ROUTE 66

Route 66 east to I-95 14 miles.

Route 66 south-
west to I-40 at
Fenner 10.4 miles.

Mountain Springs
Road south to I-40
6 miles.

1000 FT | 2000 FT | 3000 FT | 4000 FT | 5000 FT |
1 MILE