

Installation of 240 INNER Window Scraper Moldings

These instructions will guide you through the installation of a set of inner scrapers on your 240. If you have a 4-door model (sedan or wagon), these scraper pieces will come in **two different lengths**. The **SHORTER** ones go on the **FRONT** doors and the **LONGER** ones go on the **REAR** doors.

If you ordered INNER and OUTER scrapers, take note that INNER ones have a **rigid metal inner core**, so they are not as flexible as OUTER ones, which have **no metal core**.

These instructions do not discuss the disassembly and removal of the door panels from your doors. **So these instructions will begin with the door panel already removed.**

In the below photo you can see the **back side of the top edge** of the door panel. The old scraper is attached. You can see the small metal CLIPS that hold the scraper tightly in place. Those metal clips are strong (spring steel), but brittle. You can pry them to release the old scraper, but **if you pry them too far, they will break**. If you're careful, you can get this done without breaking any of them. If you break any, **new clips are available in my page**.



When working with these clips, I suggest using safety glasses or other appropriate eye protection.

Before removing the old scraper, it will be important to take note of the precise position of the old scraper ends. Those ends will need to fit in between the door vertical posts.

Using a pen, place a small mark on the door panel fabric at each end of the old scraper. Marking it in a place as shown will mean you will not see it after final installation. This will help later to position the new scraper in the same place.



For this next part of the procedure, you might want to get some help from someone to hold the panel.

Using a small flat screwdriver, carefully slip it under the clip as shown and slightly pry, while at the same time pushing the scraper toward the top of the door panel, out of the clip.

Follow the 1 - 2 - 3 - 4 sequence in these three photos. Do not bend the clip outward any more than needed to slip the scraper upward slightly with each small motion.

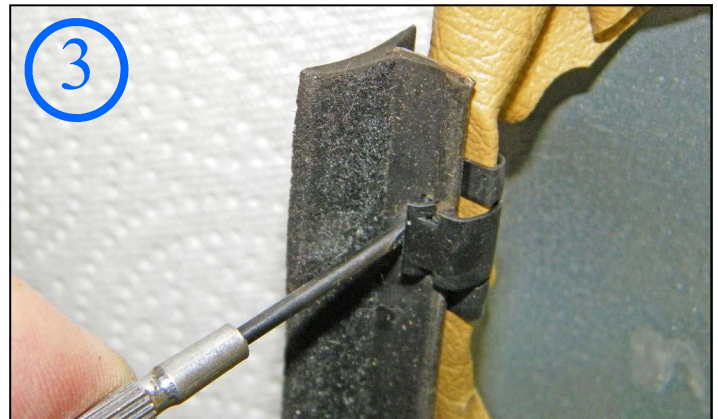
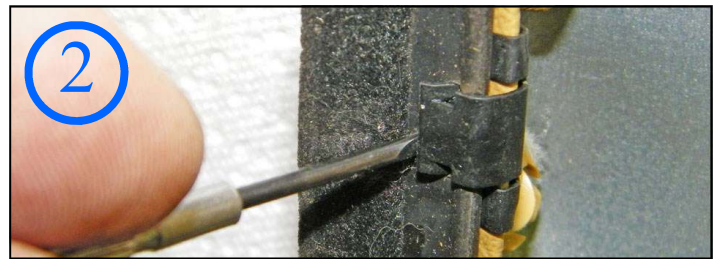
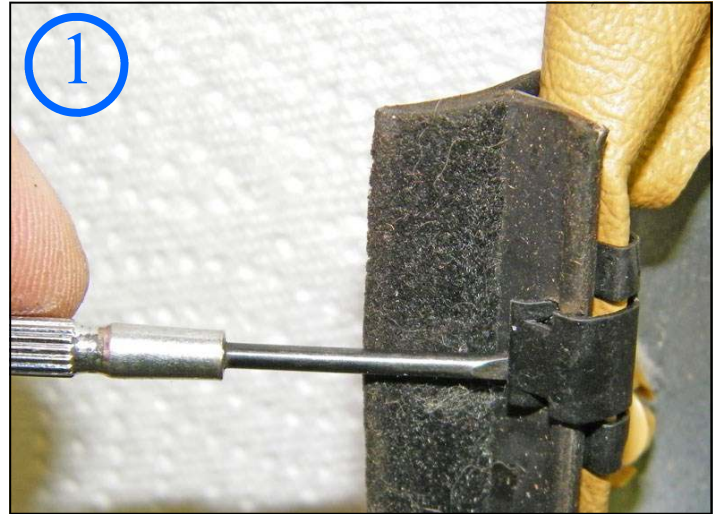
An alternate method can be to use one small screwdriver to insert and twist the clip about 30 degrees to open it slightly. Then use a second, larger screwdriver, inserting it between the scraper and door panel, about 3/4 inch away from the clip and putting pressure on it in the direction of removal.

An alternate method is using a small pair of pliers to grip the clip, rotating the pliers just enough to lift the clip up and away from the scraper and pull the scraper a small amount at a time, one clip at a time. Again, bending too far will result in breaking the clip.

Either method should be done slowly and you should alternate from one clip to the next, prying and pulling and gaining just a small movement on each try.

Your helper can also help to pull the scraper as you pry.

Continue this work along the clips, working on one clip at a time or alternate, until the old scraper is free.





Now you may position the new scraper along the tops of the clips. If you have a helper, he or she may hold one end in place. Make sure you position the new scraper in the same front/rear position as before. **That's where the pen marks were to help.**

Also be sure not to place the scraper on backwards. The part of the scraper with embedded metal inside goes into the clips and the felt side should be facing the window glass.

Now slowly push the new scraper down into the clips, working a little at a time along the length of the panel.



NOTE: The width of the new scraper may be a little wider than your old one and it may protrude past the door lock plunger collar as shown in the below photo. If this happens, you may tuck it under the door lock insert using a small screwdriver.



Here's a tip that might be useful for a door panel that doesn't seem to hold the scraper as snugly as it should to the glass. In this situation, the scraper may end up with a gap where the felt should be actually be touching the glass. If this happens, those two metal tabs shown below may have become bent away from the glass. You can then try (slightly) bending the two metal tabs a bit toward the glass.

These metal tabs hold the door panel in place at the top. Bending them a little toward the glass will help to hold the door panel tighter and the scraper felt closer to the glass.

